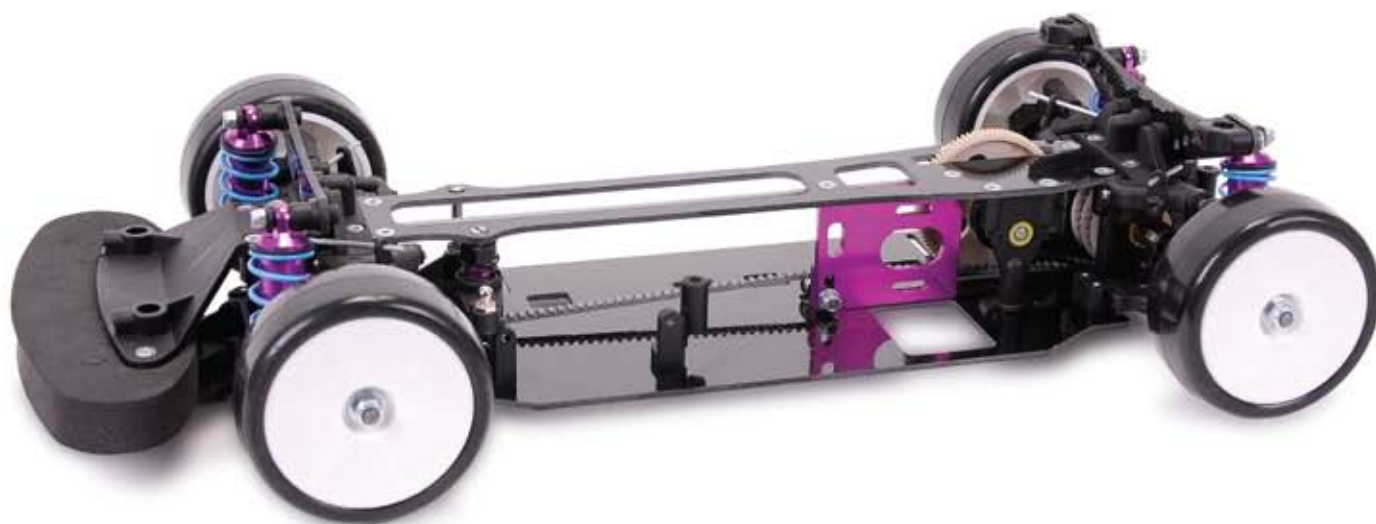


MiG one

Instruction Manual v1.0



Schumacher Racing
73 Tenter Road
Moulton Park
Northampton
NN3 6AX
ENGLAND

Schumacher
racing-cars.com

Additional Items Required

Transmitter, receiver and servo
(including AA batteries for tx)



Electronic Speed Control



Battery Pack



Battery Tape



Motor



Pinion Gear



Battery Charger



Bodyshell & Paint



Tyres & Inserts



Tools

HWD10 Wiha Precision
Circlip Pliers



CRD44 Curved Body Scissors



HWD08 Wiha Torx Driver - T10



ED110115 Hex Driver 1.5 x 120mm
ED110120 Hex Driver 2.0 x 120mm
ED110125 Hex Driver 2.5 x 120mm



ED150155 Nut Driver 5.5 x 100mm
ED150170 Nut Driver 7.0 x 100mm



Turnbuckle Wrench 4mm ED190009



U3107 - Solder

IMPORTANT SAFETY NOTES

- This product is not suitable for children under the age of 14, without the direct supervision of an adult.
- Select an area for assembly that is away from the reach of small children. The parts in this kit are small and can be swallowed by children causing choking and possible internal injuries.
- Exercise care when using hand tools and sharp instruments during assembly.
- Carefully read all manufacturers warnings and cautions for any additional parts used in the construction.
- In line with our policy of continuous development the exact details of the kit may vary.

MiG one

Schumacher Racing stocks and distributes the following manufacturers products and full product listings are available on our website at www.racing-cars.com.

PLEASE NOTE THAT SOME OF THE PRODUCT RANGES BELOW ARE ONLY AVAILABLE IN THE UNITED KINGDOM.

CORE-RC
COM

NISRAM

Speed
Passion
RC Technology Revolution

RACING
GM

Wiha

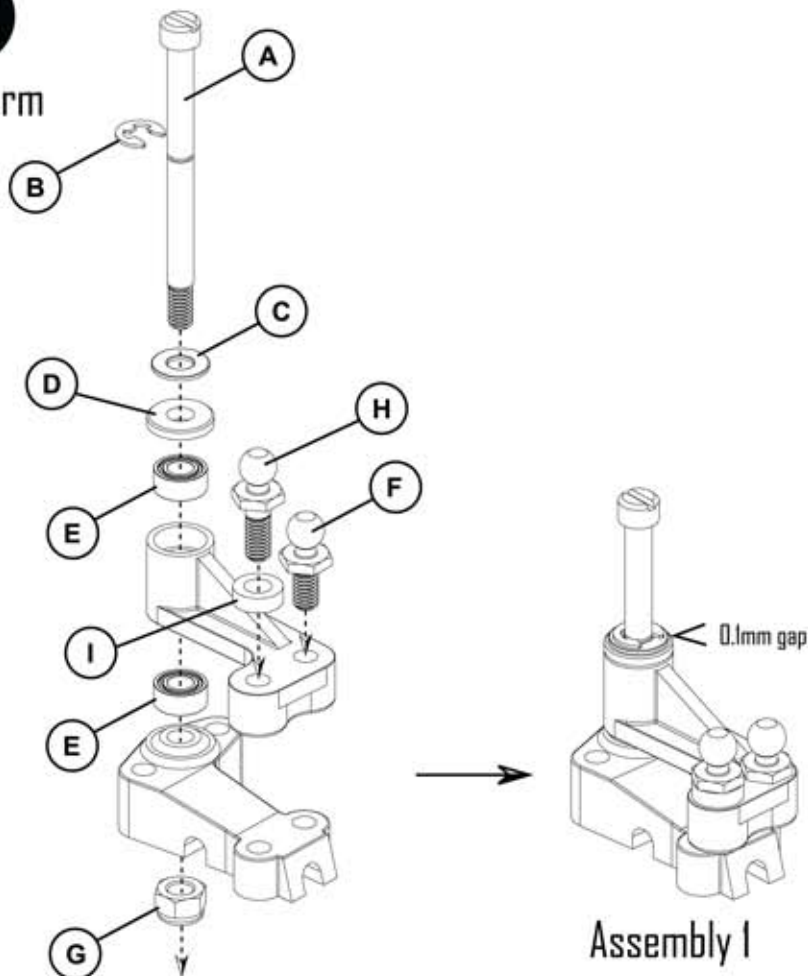
EastCoast
BodiesTune

TEAM
SOREX

Specialized RC Tools
CDS

contact
RC RACING TYRES

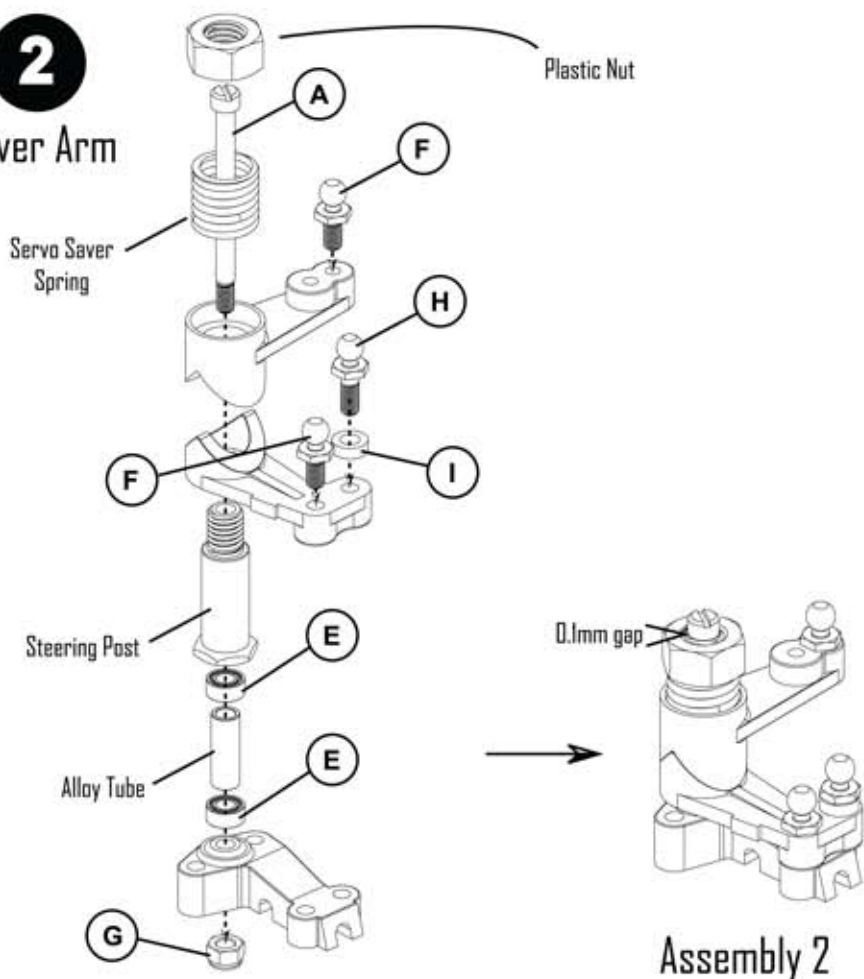
1 Lever Arm



STEERING ASSEMBLY Parts required:

- A**  Steering Post Long x 2
- B**  "E" Clip x 1
- C**  M3 Steel Washer x 1
- D**  Stepped Washer x 1
- E**  1/8" x 1/4" Ball Race x 4
- F**  Ball Stud Short M3 x 3
- G**  M3 Nyloc Nut x 2
- H**  Ball Stud Long M3 x 2
- I**  2mm Spacer x 2

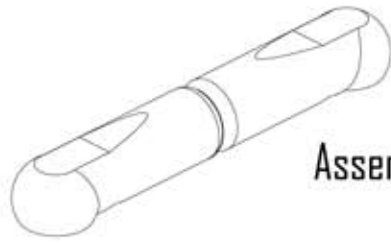
2 Saver Arm



TRACK TIP 01
Ensure that the steering posts are screwed in as vertically as possible (90°).

3

Centre Track Rod



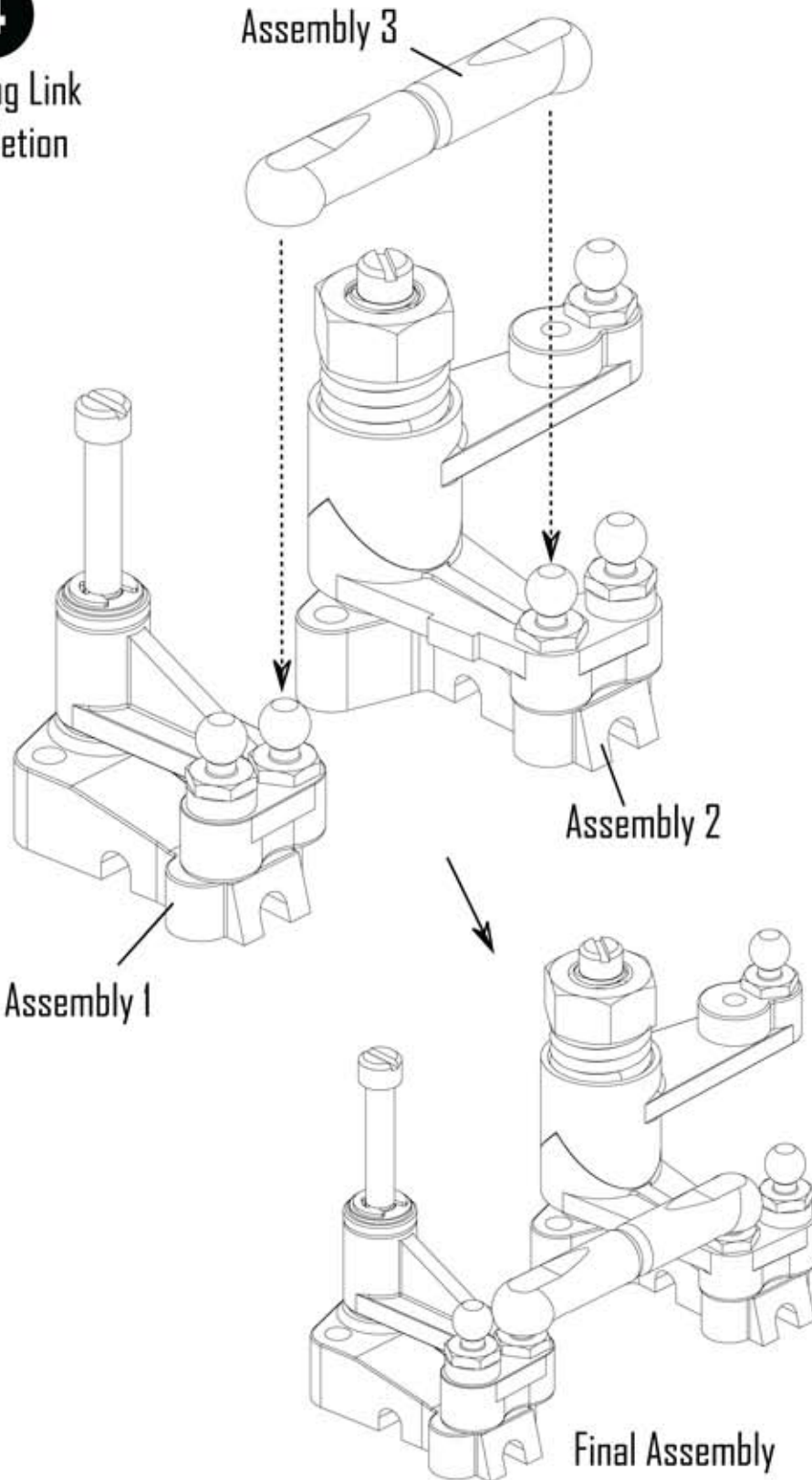
Assembly 3



STEERING ASSEMBLY
Continued

4

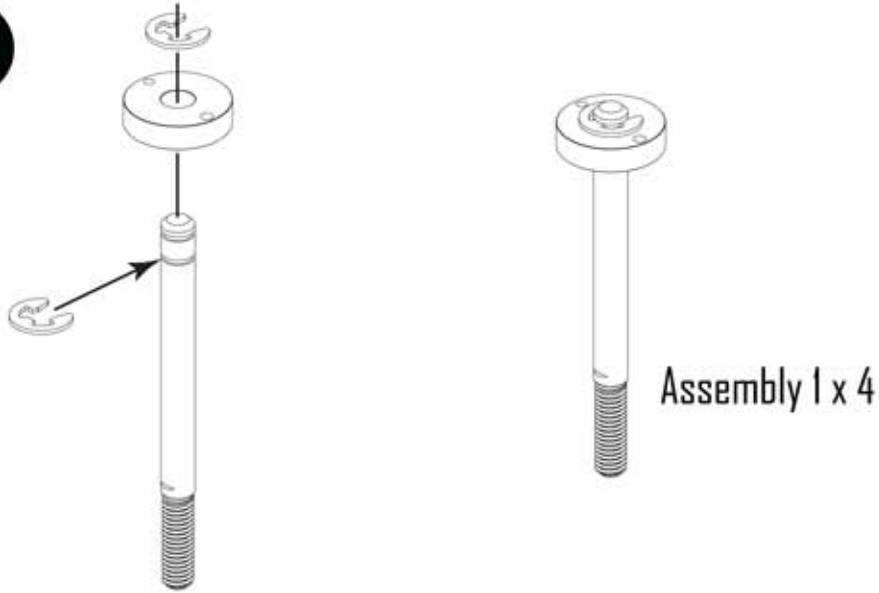
Steering Link
Completion



2

TRACK TIP 02
Always ensure that the steering arms are as free as possible, but with no slop.

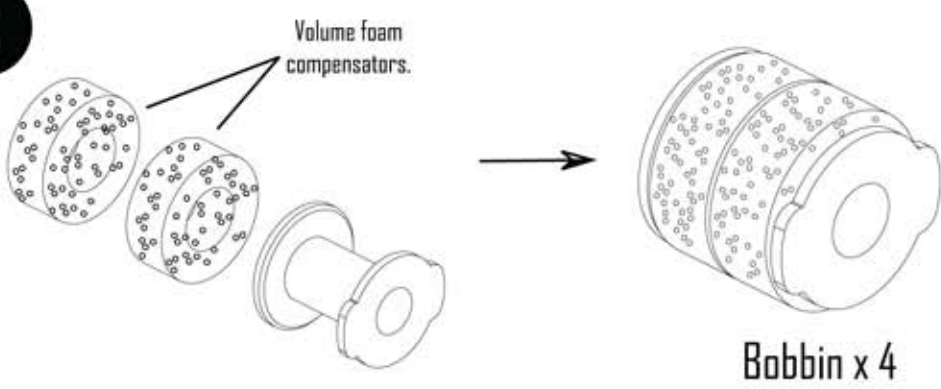
1



SHOCK ASSEMBLY
Parts required:

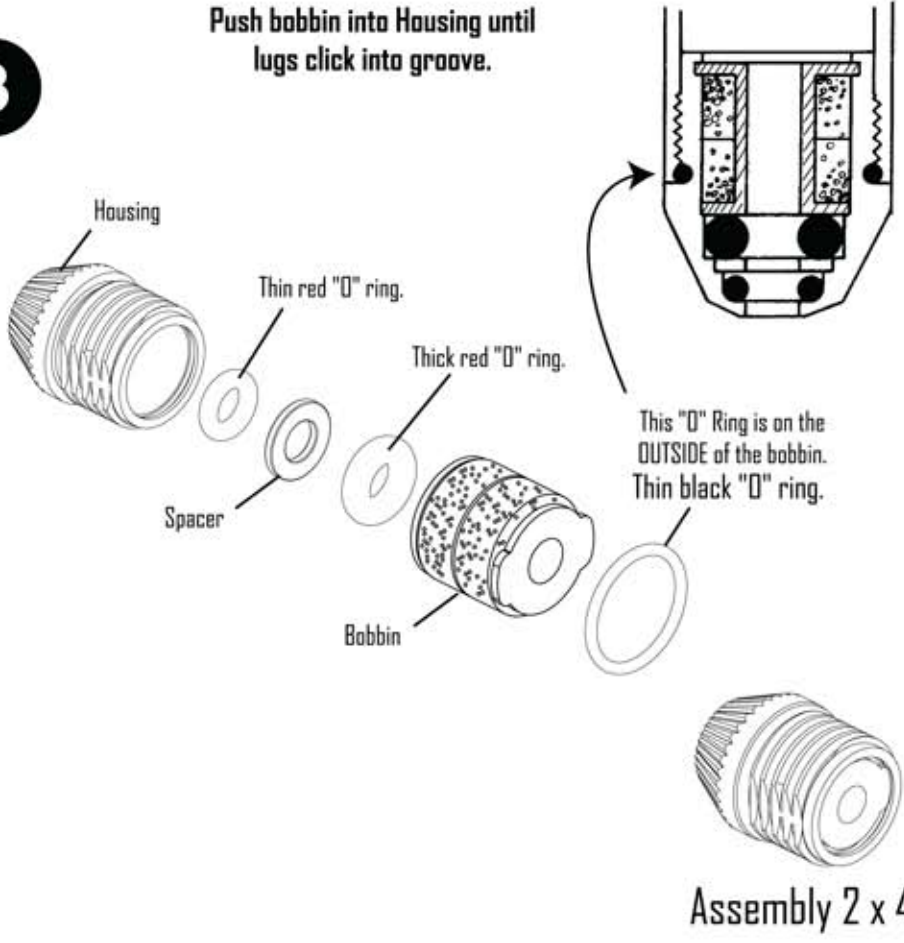
- A** "E" clip x 8

2



3

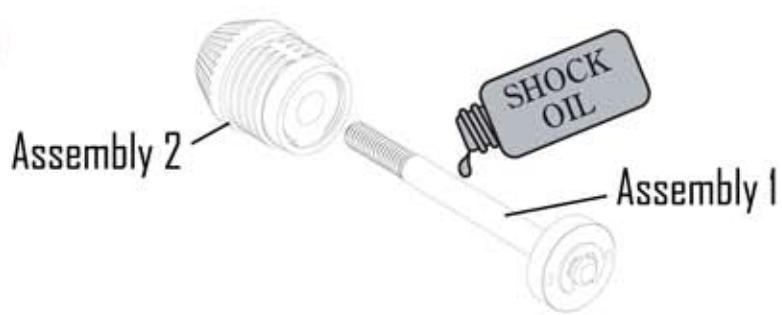
Push bobbin into Housing until
lugs click into groove.



TRACK TIP 03
Soak the volume foam compensators in shock oil before assembly, this will help with air free shocks!

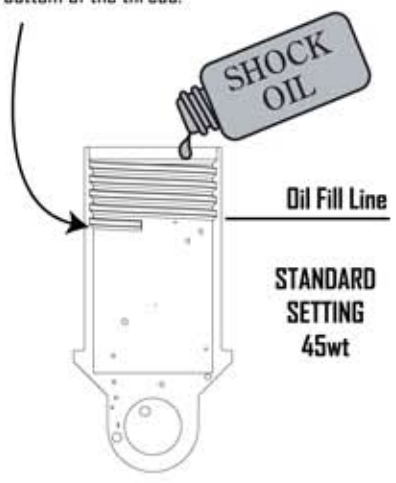
3

4



5

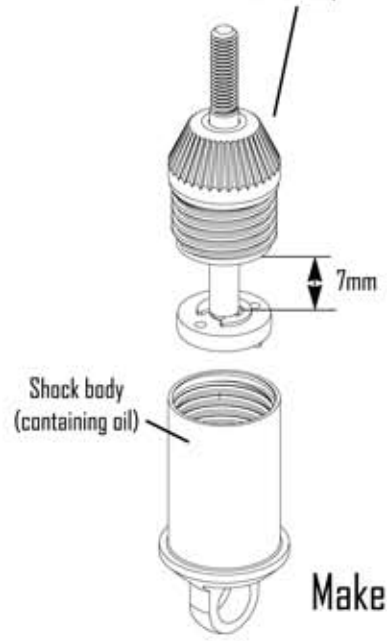
Fill shock body with oil to the bottom of the thread.



Make 4

6

Position assembly as shown and carefully screw into the shock body. (some oil will spill from the body, clean with tissue)



Make 4

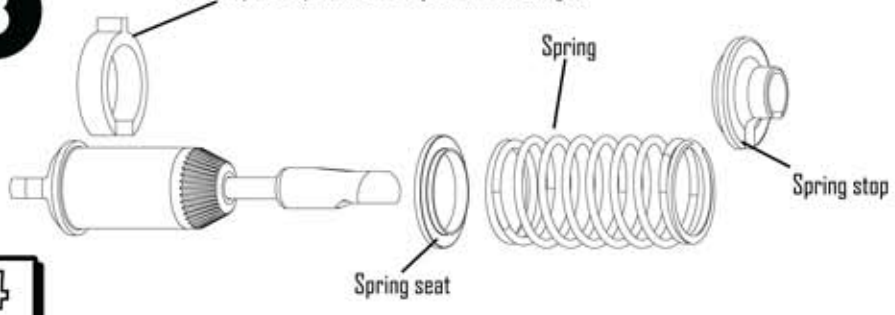
7

Note: When housing is assembled correctly there is no black "O" ring showing.



8

Shock spacer (pick size to adjust the ride height)

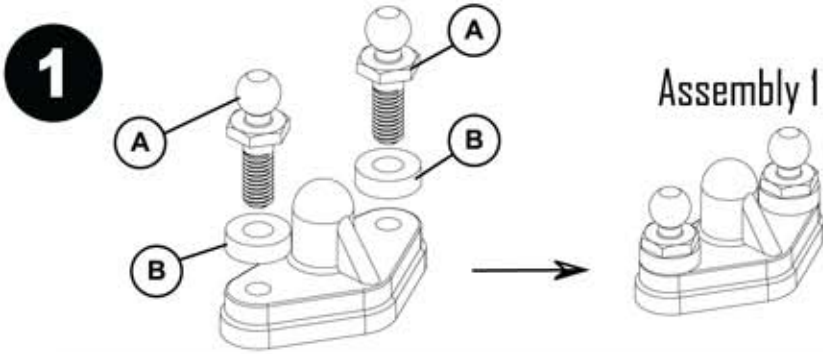


4

SHOCK ASSEMBLY Parts required:

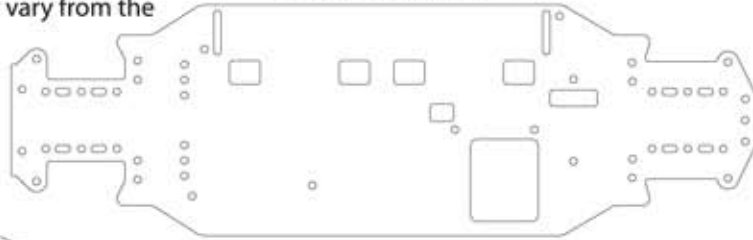
- (A) Ball Socket x 4

TRACK TIP 04
Ensure the shocks are all the same length!



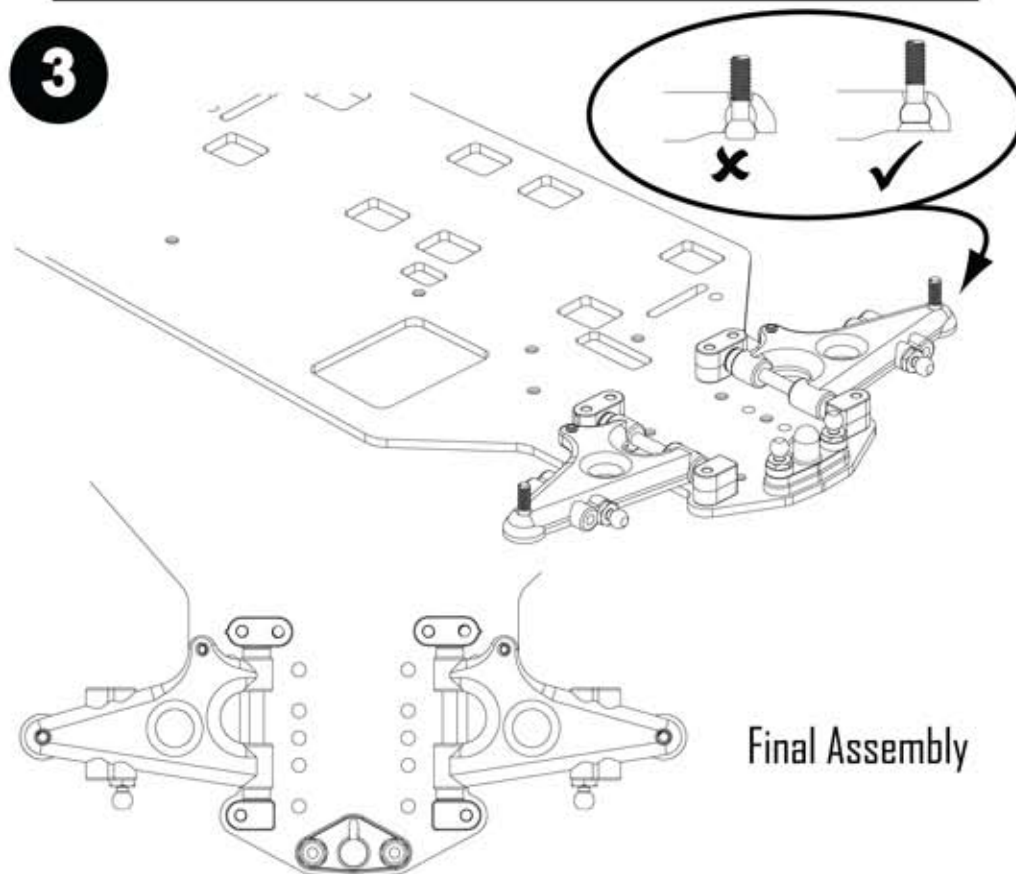
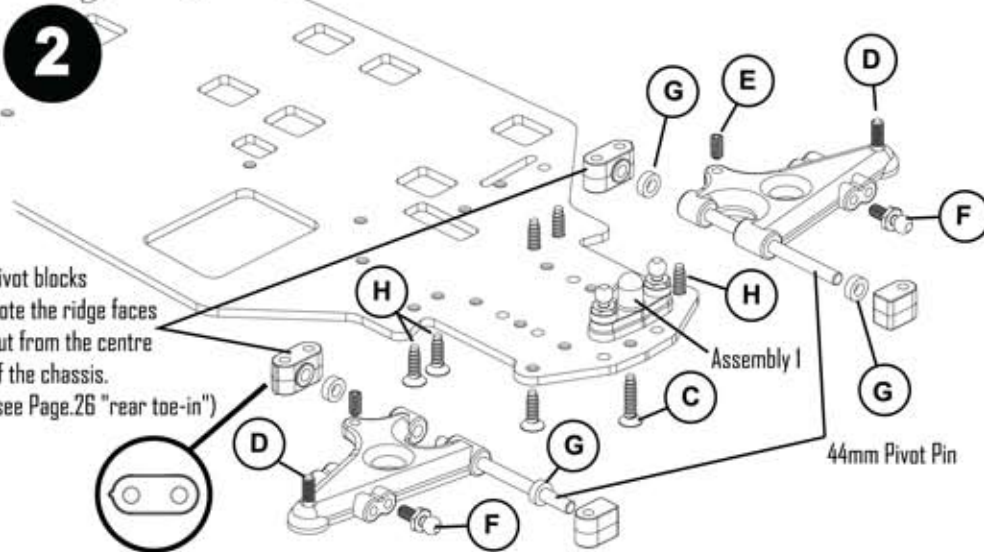
Due to our Continued Development some illustrations may vary from the actual parts

Actual Chassis Profile



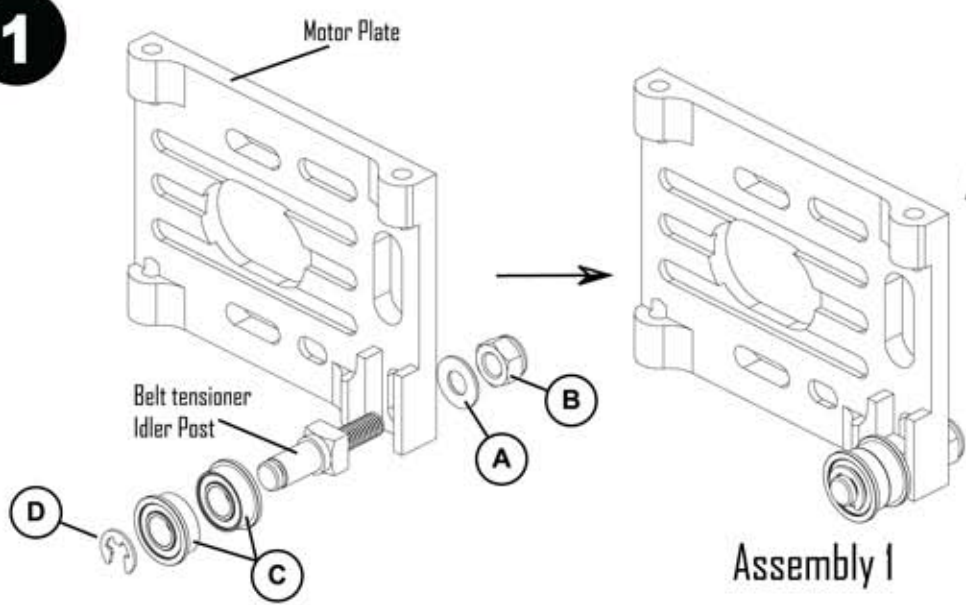
BAG 1 ASSEMBLY Parts required:

- A**  Ball Stud Long M3 x 2
- B**  2mm x 3mm Spacer x 2
- C**  M3 x 12 Csk Torx Head x 1
- D**  Allen Ball Stud M3 x 2
- E**  M3 x 6 Grub Screw x 2
- F**  Ball Stud Short M3 x 2
- G**  2mm x 1/8" spacer x 4
- H**  M3 x 10 Csk Torx Head x 6



TRACK TIP 05
Adjust the grub screws so that the wishbones are flush with the bottom of the chassis.

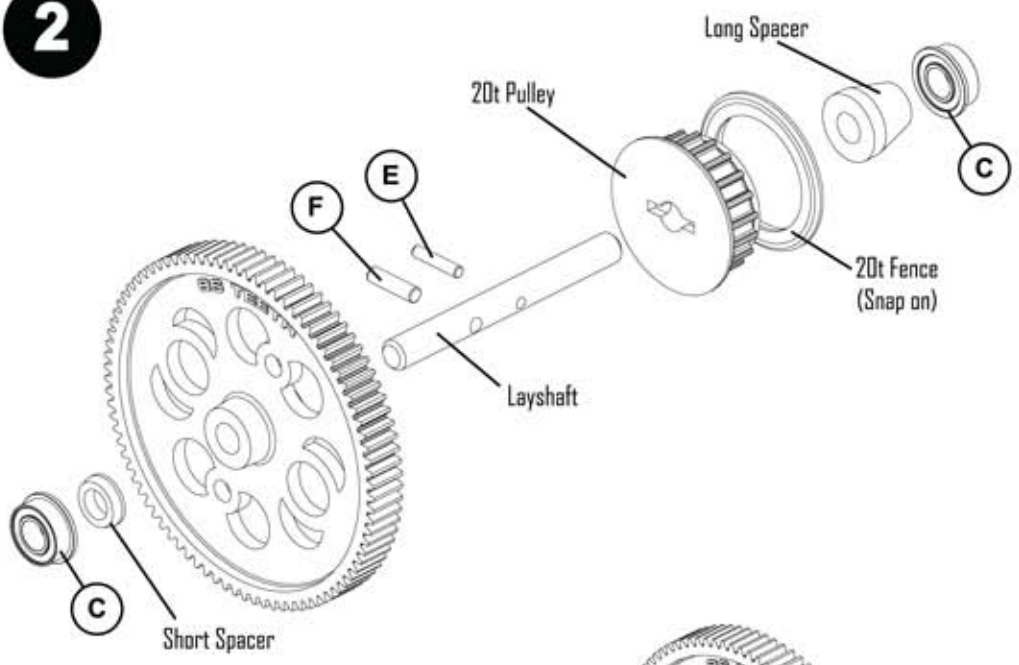
1



BAG 2 ASSEMBLY
Parts required:

- A** M3 Steel Washer x 1
- B** M3 Nyloc Nut x 1
- C** 4 x 8 x 3 Flanged Ball Race x 4
- D** "E" Clip x 1
- E** 1.5mm x 7.8mm Needle Roller x 1
- F** 2mm x 7.8mm Needle Roller x 1

2

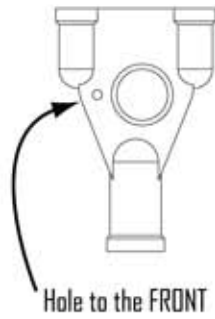


TRACK TIP 06
Temporarily set belt tensioner at it's lowest possible setting.

6

3

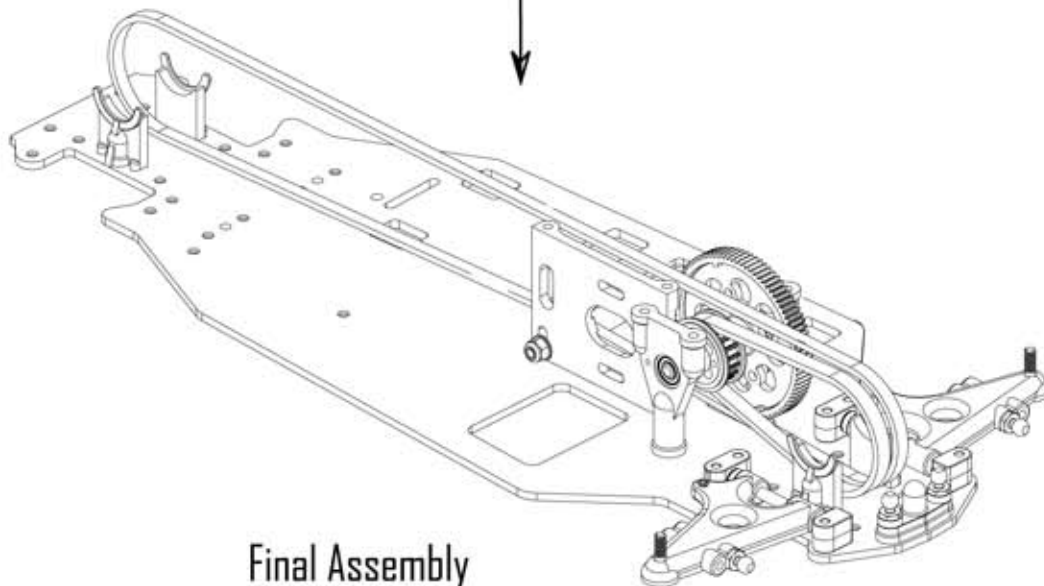
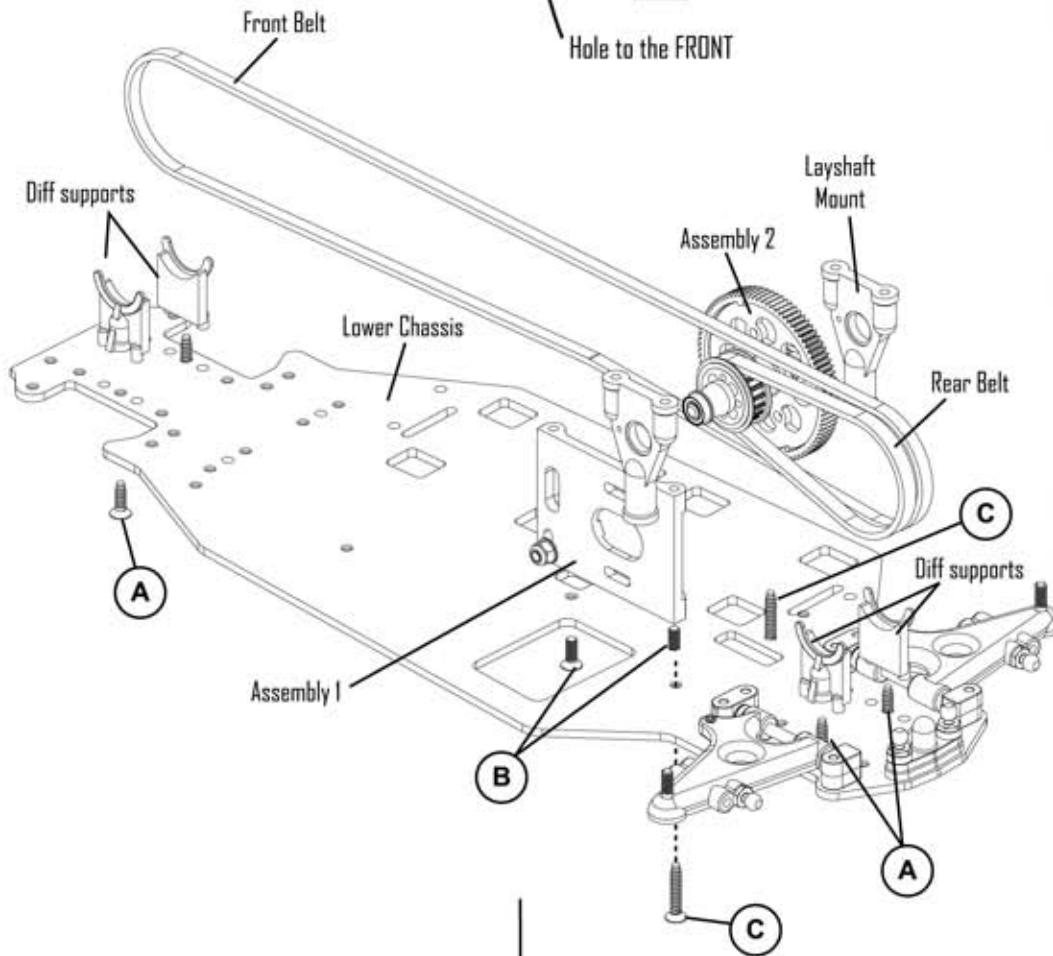
NOTE:
The position of the layshaft mount.



MiG one

BAG 2 ASSEMBLY Parts required:

- A**  M3 x 10 Csk Torx Head x 4
- B**  M3 x 8 Csk Torx Head x 2
- C**  M3 x 16 Csk Torx Head x 2



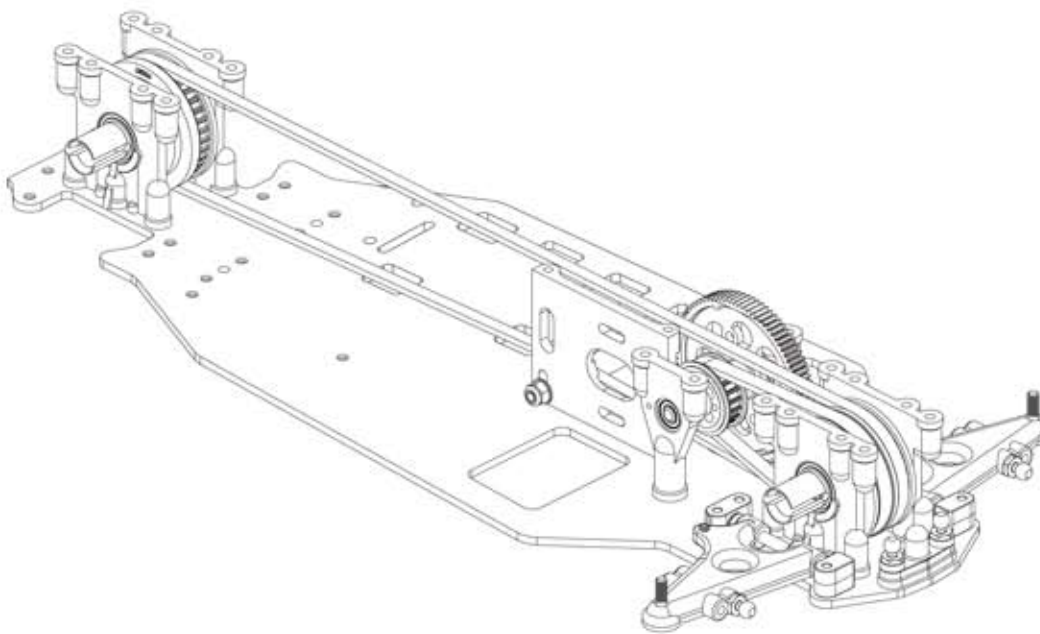
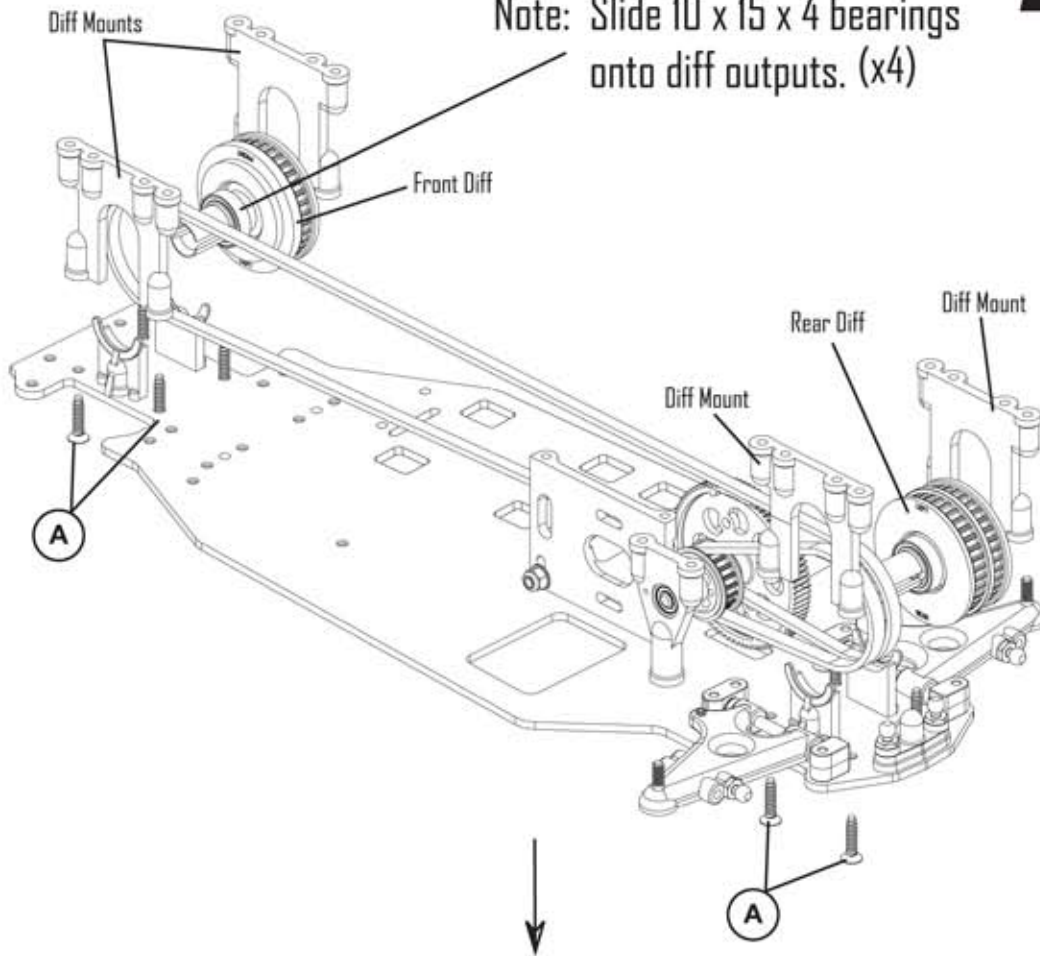
TRACK TIP 07
DO NOT "crimp" the belts during assembly.

7

1




Note: Slide 10 x 15 x 4 bearings onto diff outputs. (x4)



Final Assembly

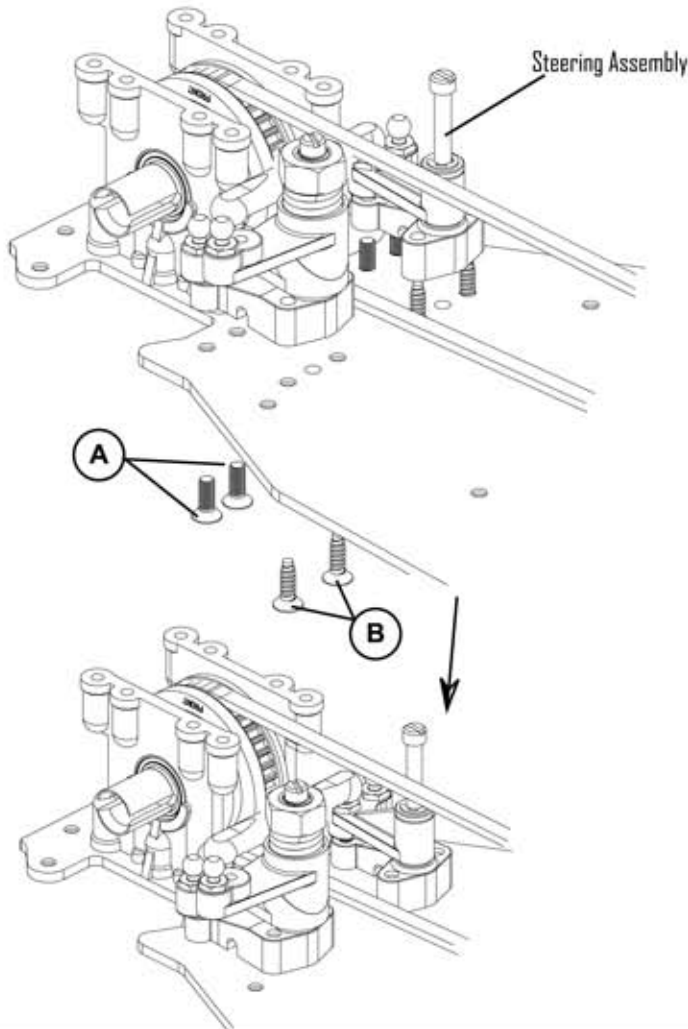
BAG 3 ASSEMBLY Parts required:

- A  M3 x 12 Csk Torx Head x 8

TRACK TIP 08
Make sure that both diffs are fitted the correct way round.

8

1

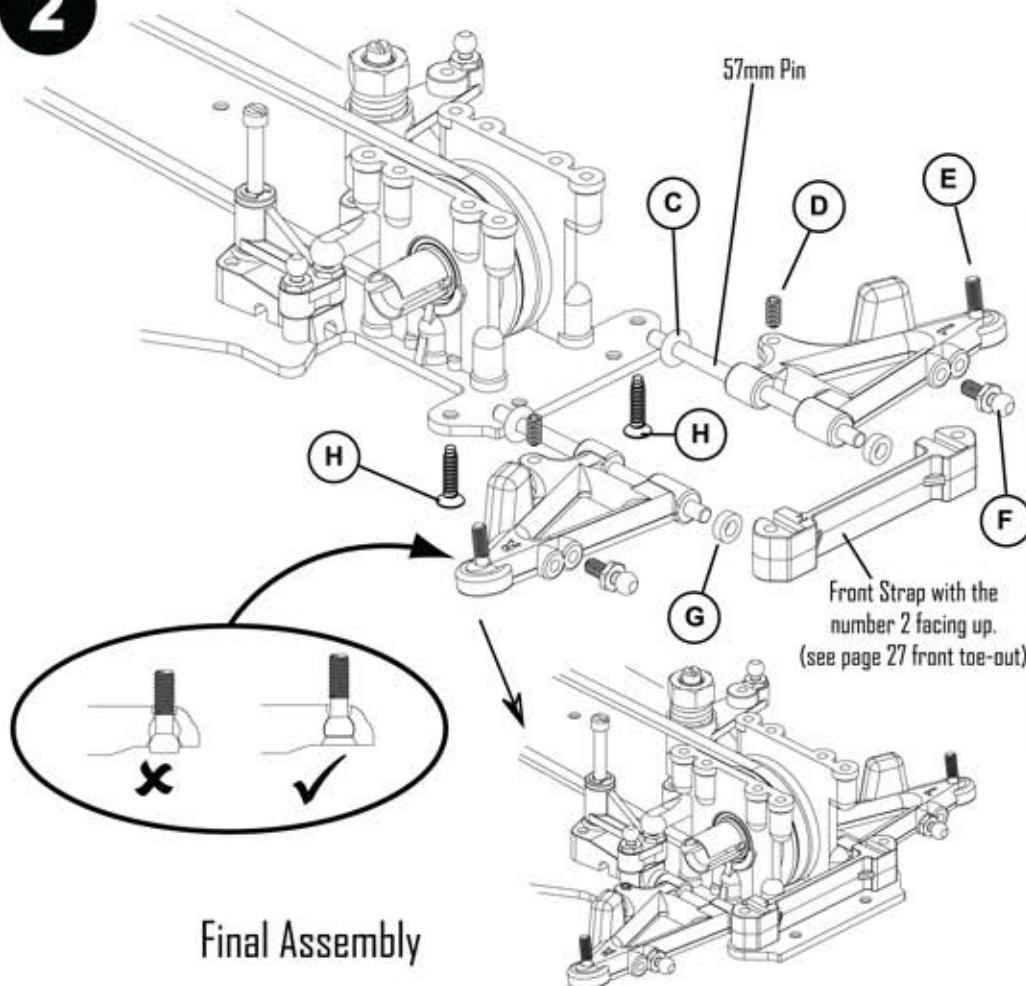


MiG one

BAG 4 ASSEMBLY Parts required:

- A**  M3 x 6 Csk Torx Head x 4
- B**  M3 x 10 Csk Torx Head x 4
- C**  Red "D" ring x 2
- D**  M3 x 6 Grub Screw x 2
- E**  Allen Ball Stud M3 x 2
- F**  Ball Stud Short M3 x 2
- G**  2mm x 1/8" spacer x 2
- H**  M3 x 12 Csk Torx Head x 2

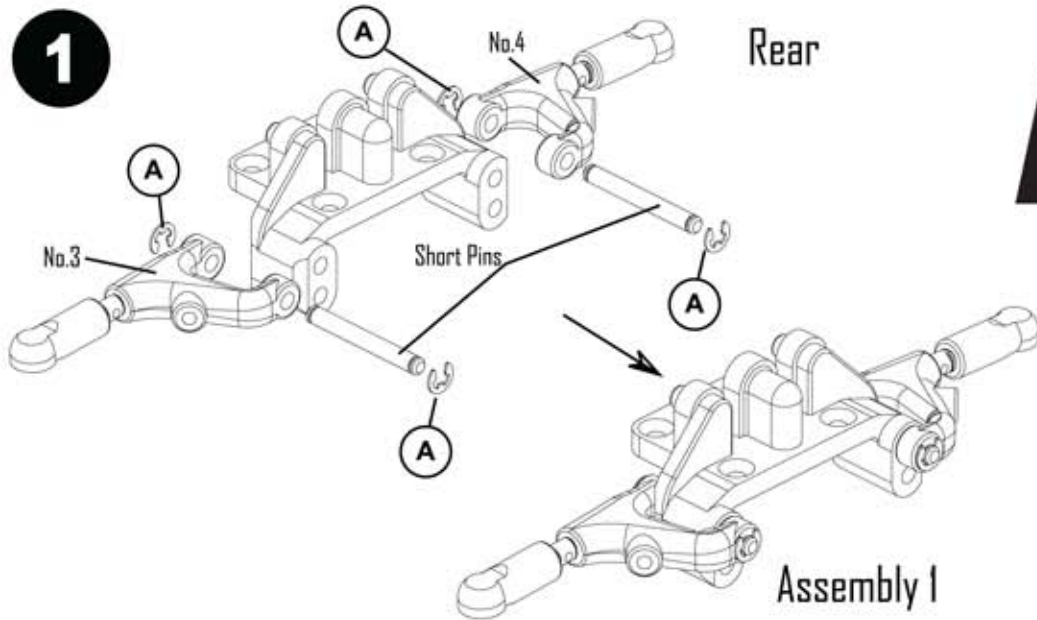
2



Final Assembly

TRACK TIP 09
Adjust the grub screws so that the wishbones are flush with the bottom of the chassis.

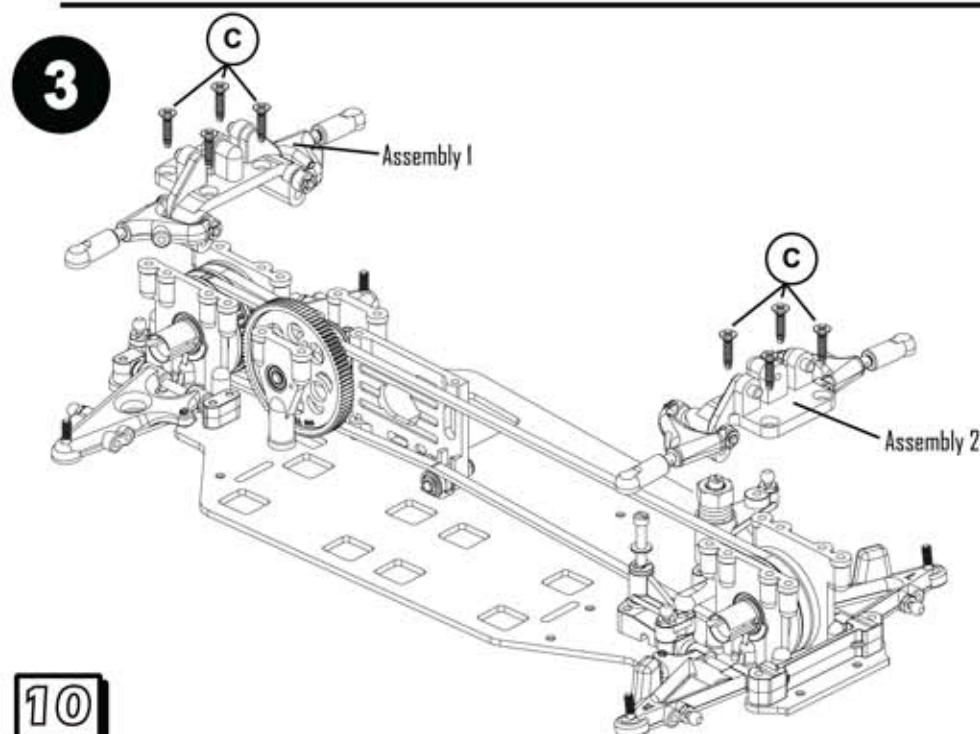
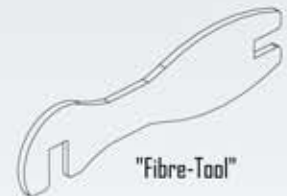
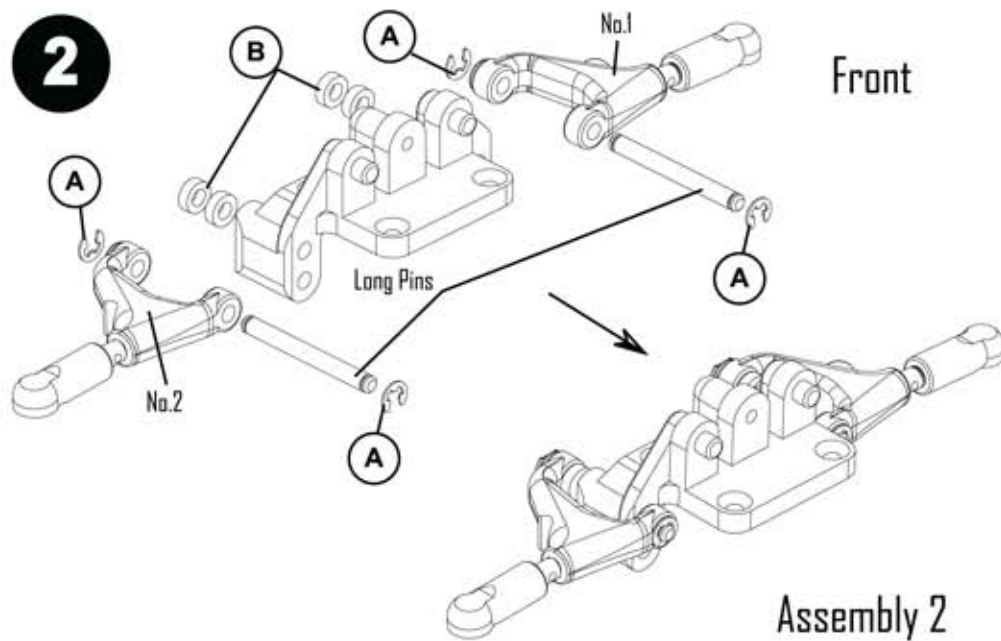
9



BAG 5 ASSEMBLY

Parts required:

- A** "E" Clip x 8
- B** 2mm x 1/8" spacer x 4
- C** M3 x 12 Csk Torx Head x 8



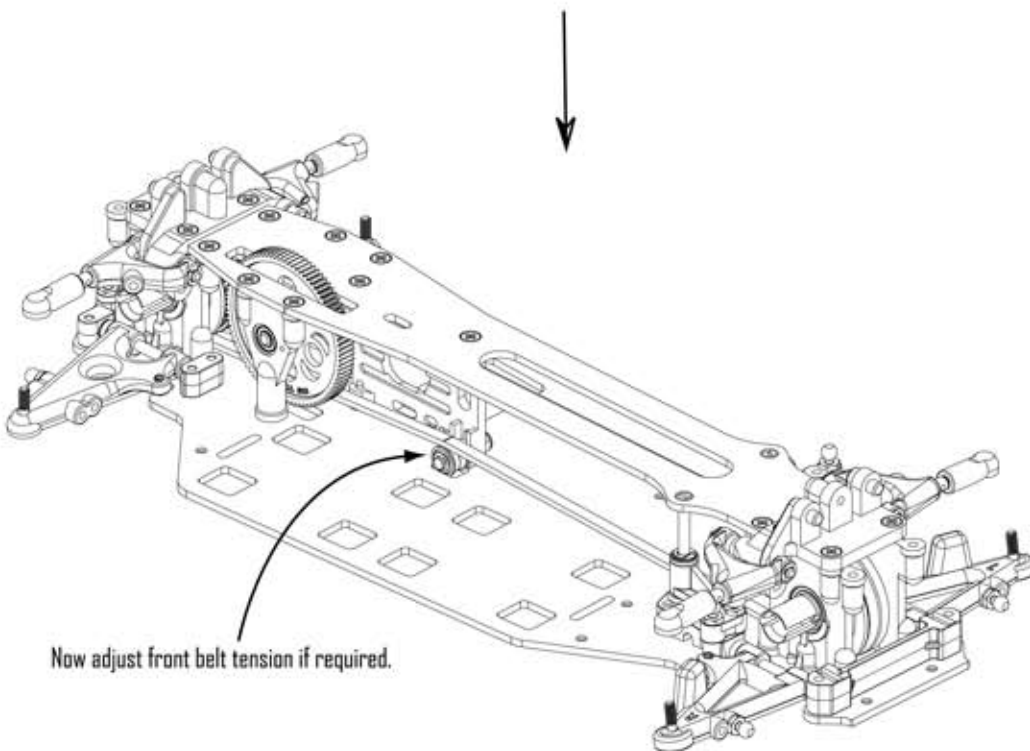
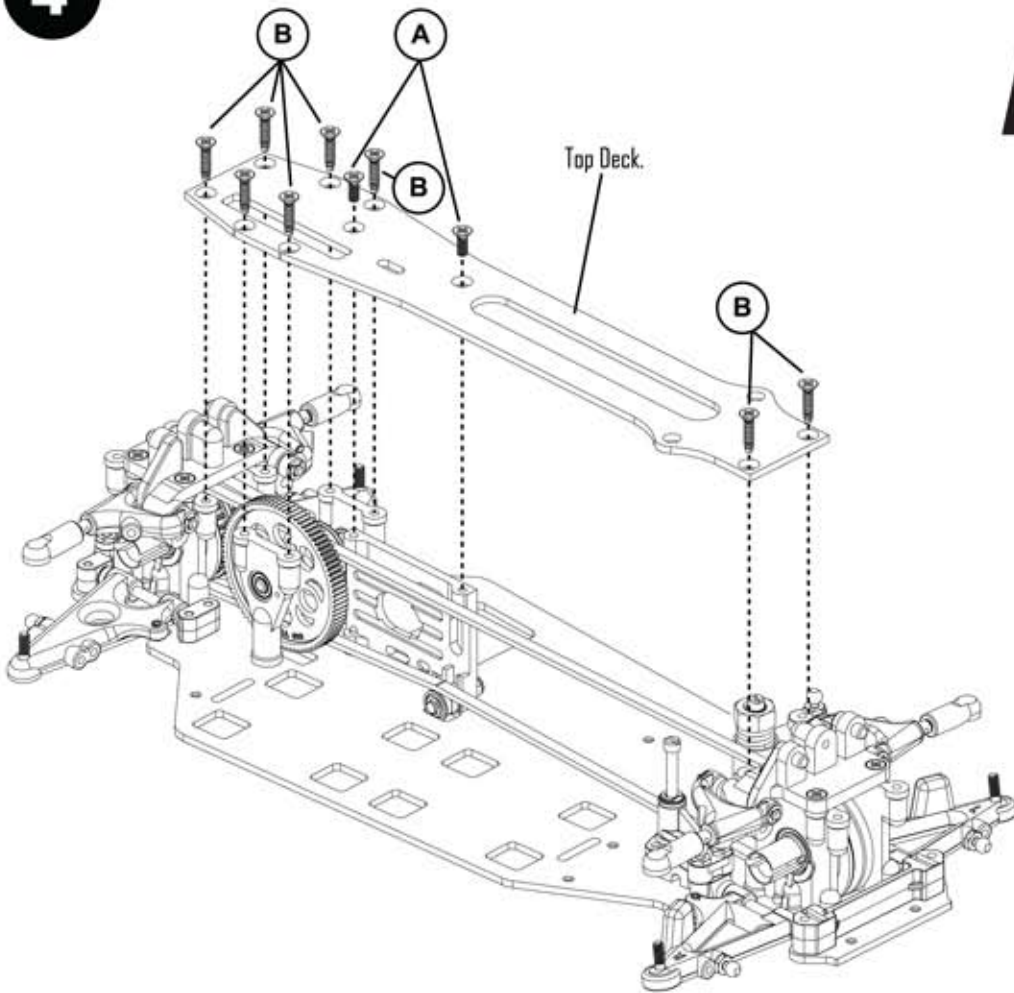
TRACK TIP 10
Adjust the upper wishbone turnbuckle, using the "fibre-tool" and a 1.5mm allen key. This "un-sticks" the plastic from the thread. This makes future adjustment easier when your MISSION is fully assembled!

4

MiG^{one}

BAG 5 ASSEMBLY Parts required:

- A**  M3 x 8 Csk Torx Head x 2
- B**  M3 x 12 Csk Torx Head x 8



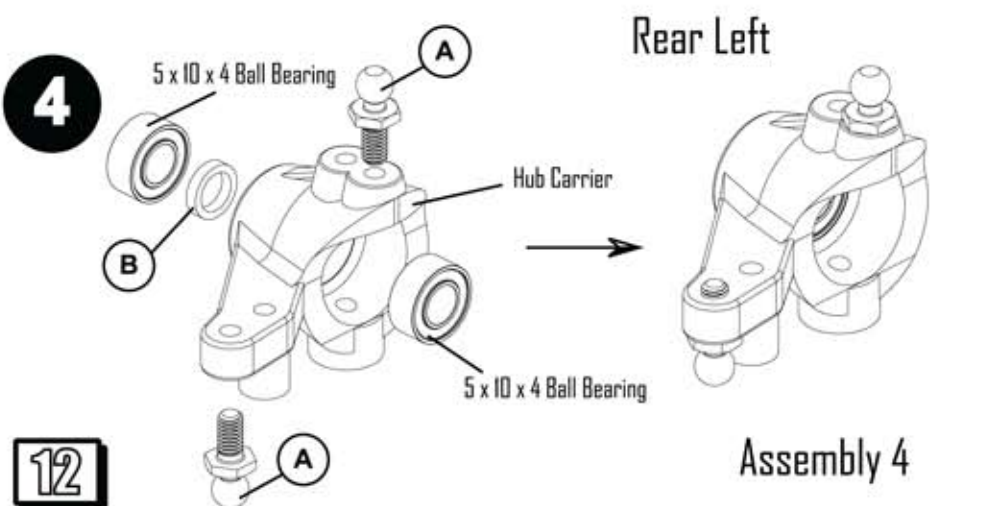
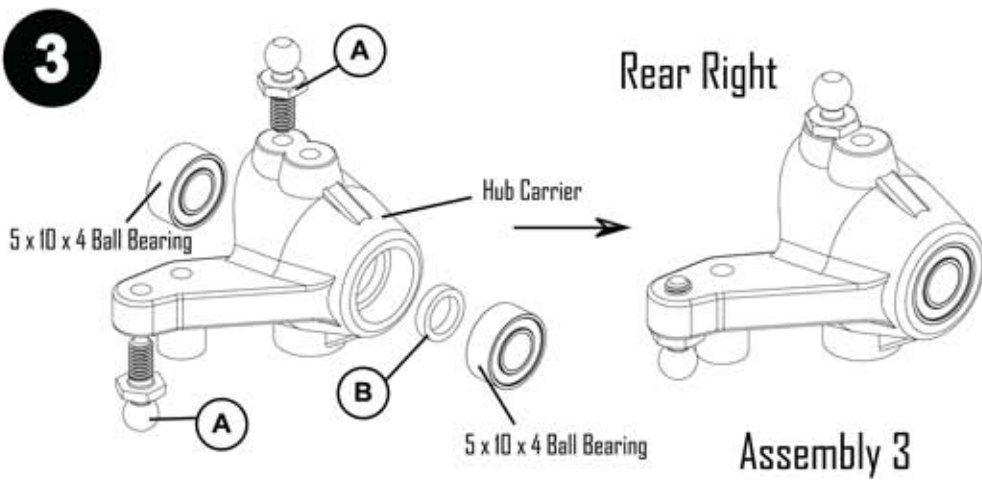
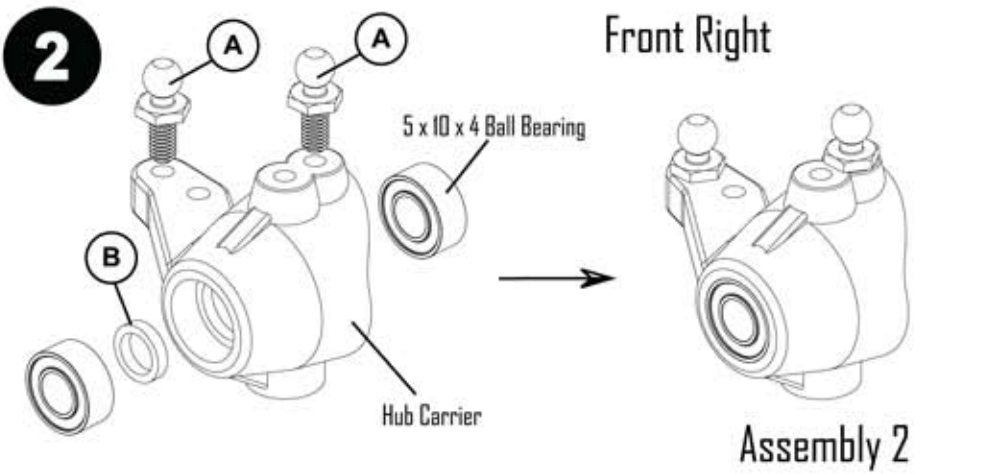
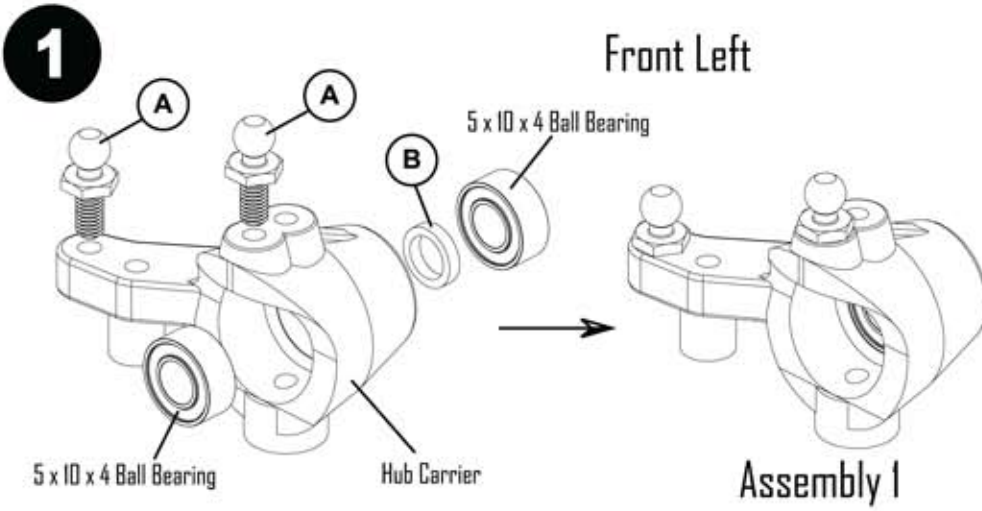
Final Assembly

TRACK TIP 11
The belt should be adjusted to give minimum tension, with no belt jump.

BAG 6 ASSEMBLY

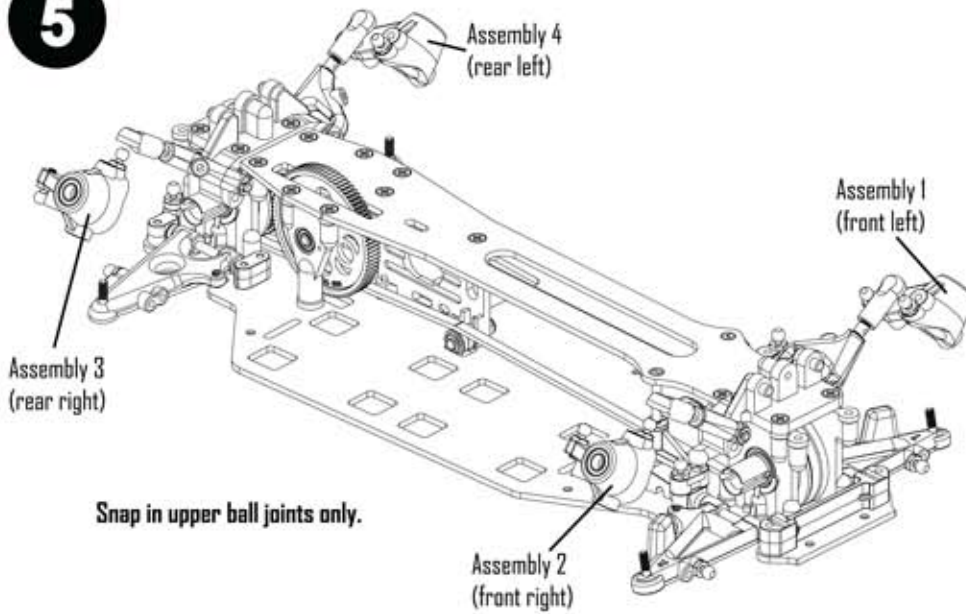
Parts required:

- A**  Ball Stud Short M3 x 8
- B**  Thick wheel shim x 4



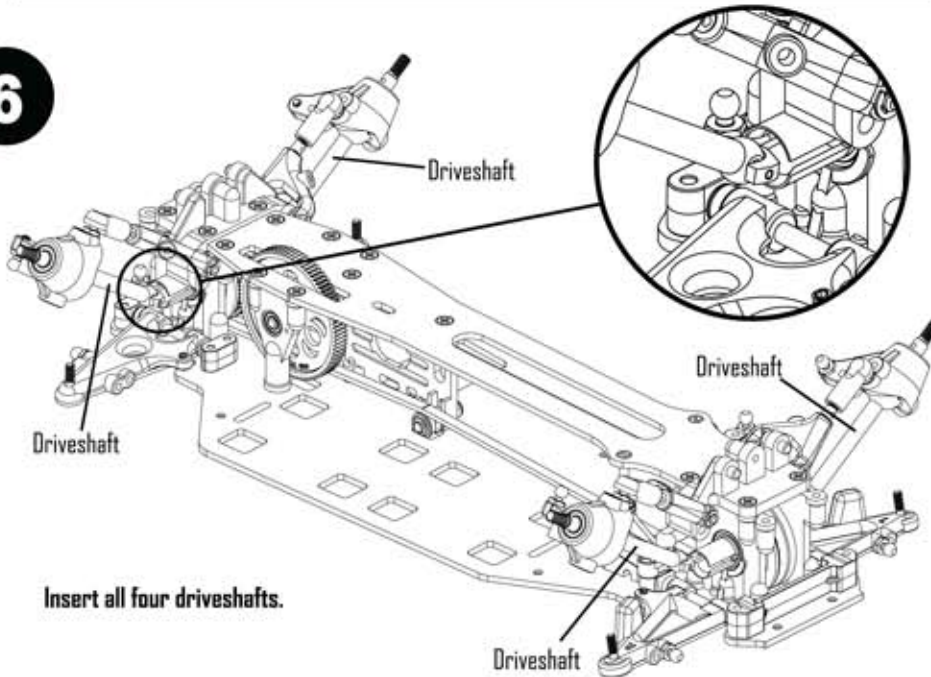
BAG 6 ASSEMBLY

5



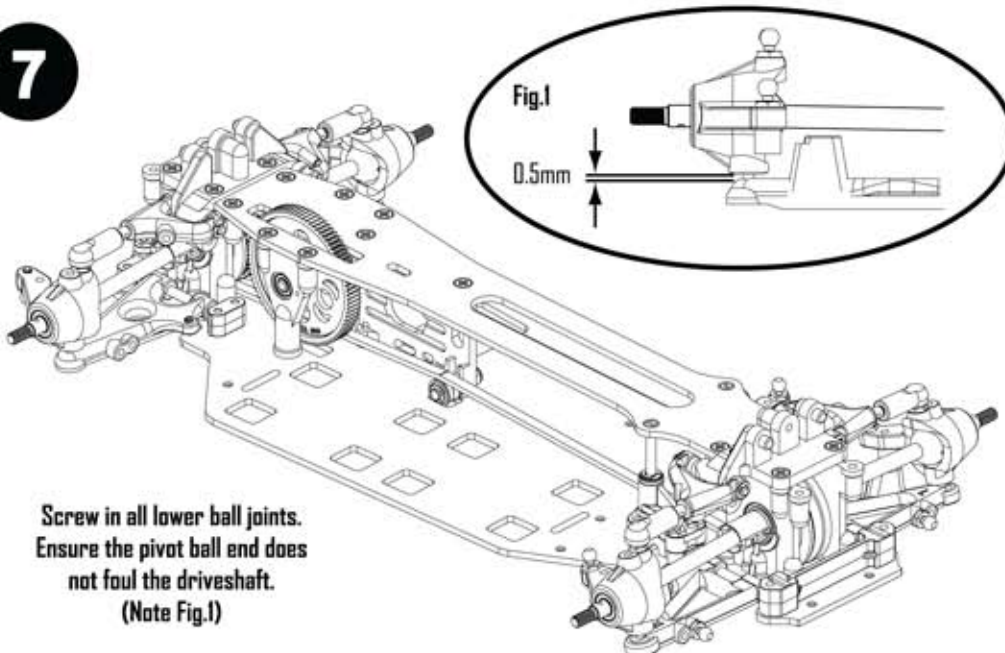
Snap in upper ball joints only.

6



Insert all four driveshafts.

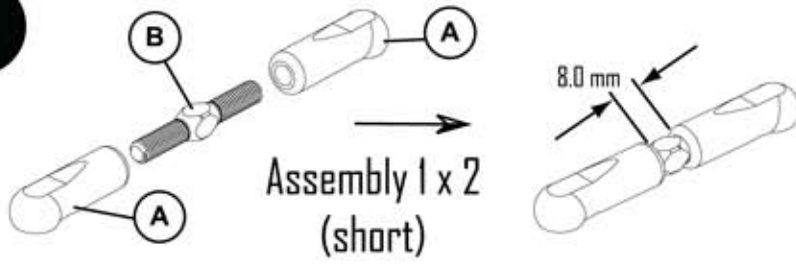
7



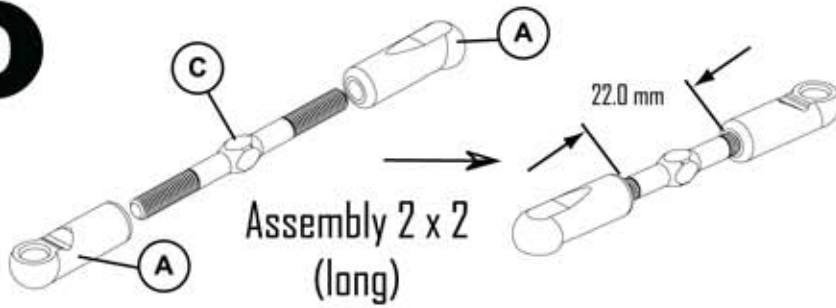
Screw in all lower ball joints.
Ensure the pivot ball end does not foul the driveshaft.
(Note Fig.1)

TRACK TIP 13
Place driveshaft blades into the outputs before screwing in lower ball joints.

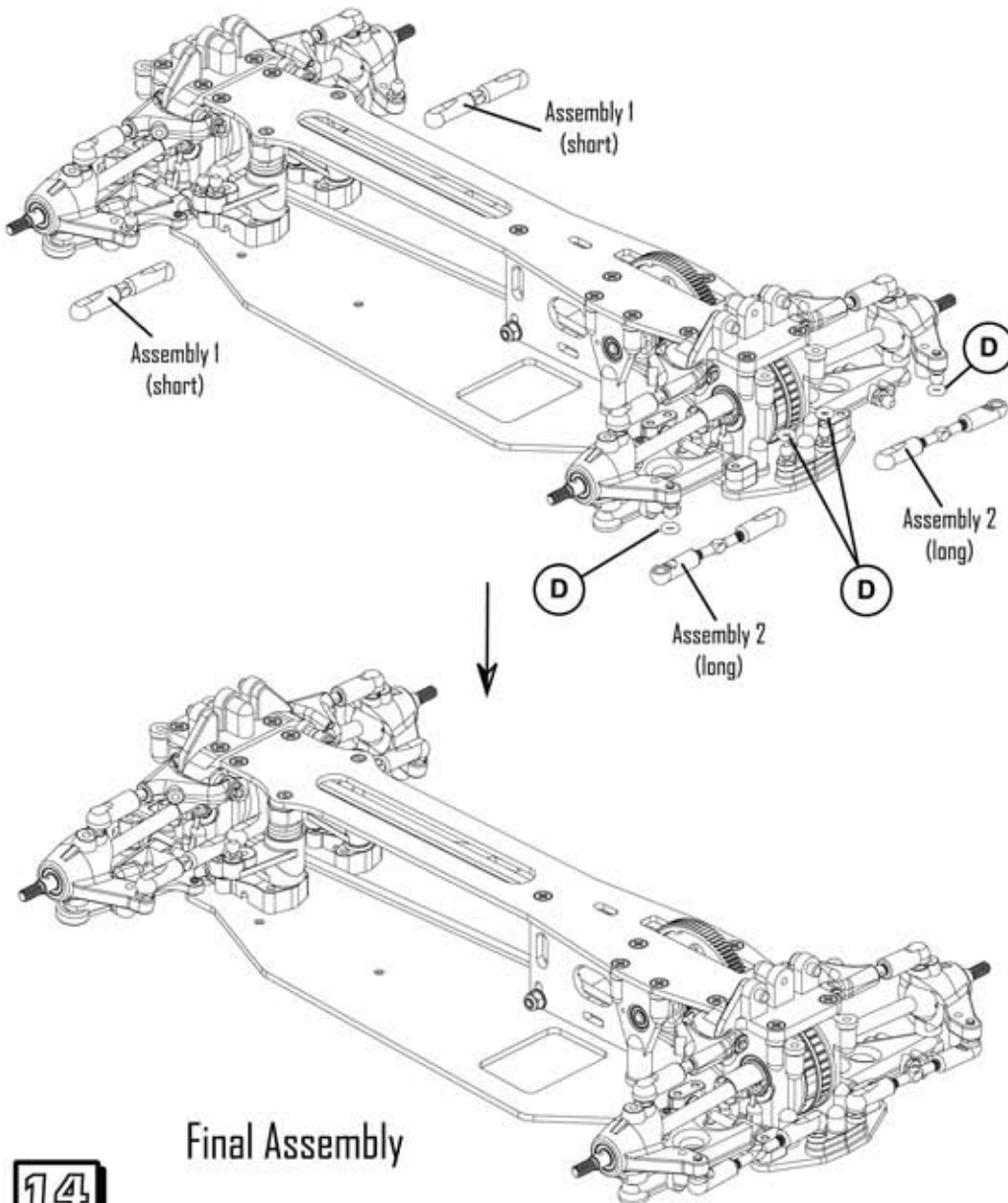
8



9







10



BAG 6 ASSEMBLY

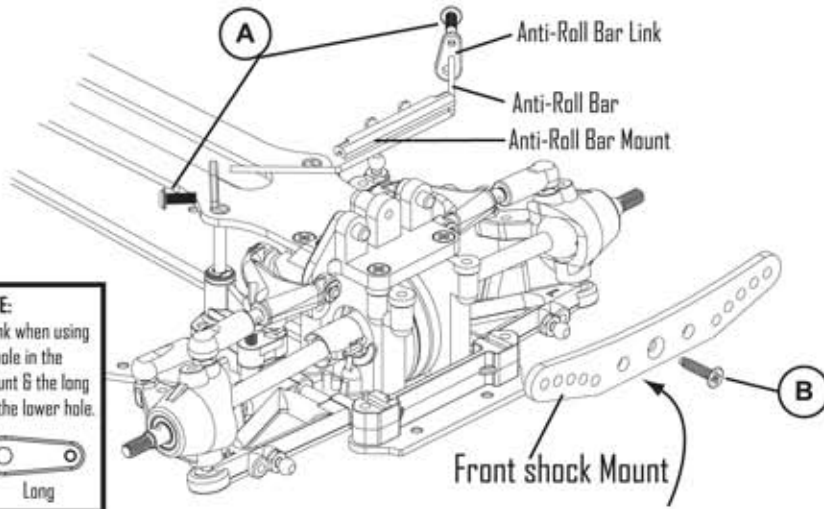
Parts required:

- A**  Ball Socket x 8
- B**  24mm Turnbuckle x 2
- C**  39mm Turnbuckle x 2
- D**  Small Red "D" Ring x 4

TRACK TIP 14
 Make the final toe-in settings after the wheels are fitted.

14

1 Front



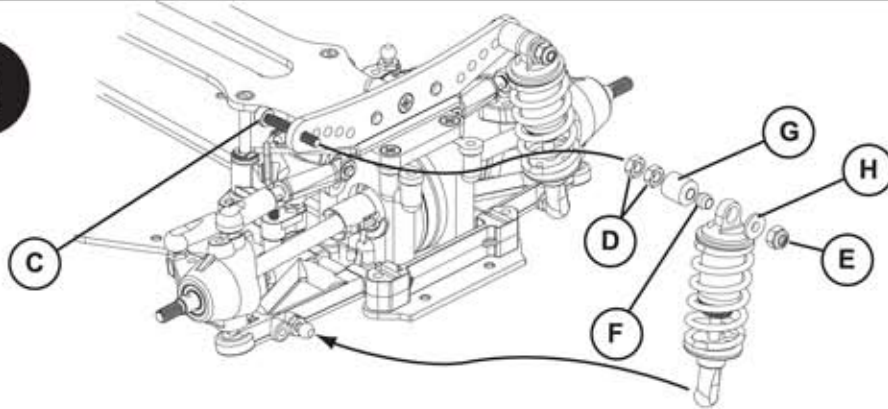
NOTE:
Use the short link when using the upper hole in the suspension mount & the long link when using the lower hole.

Short Long

BAG 7 ASSEMBLY Parts required:

- A** M3 x 8 Button Head x 4
- B** M3 x 12 Csk Torx Head x 2
- C** M3 x 20 Cap Head x 4
- D** M3 Nut x 8
- E** M3 Nylac Nut x 4
- F** Shock Mount Bush x 4
- G** Shock Mount Collar x 4
- H** Shock Mount Washer x 4

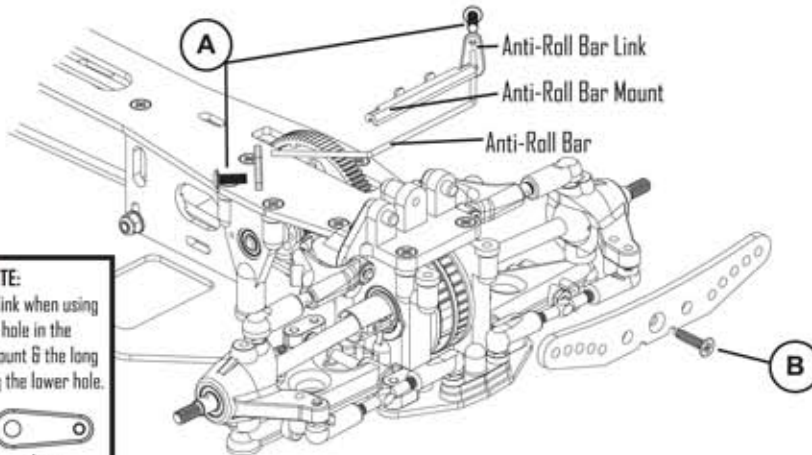
2



Due to our Continued Development some illustrations may vary from the actual parts



3 Rear



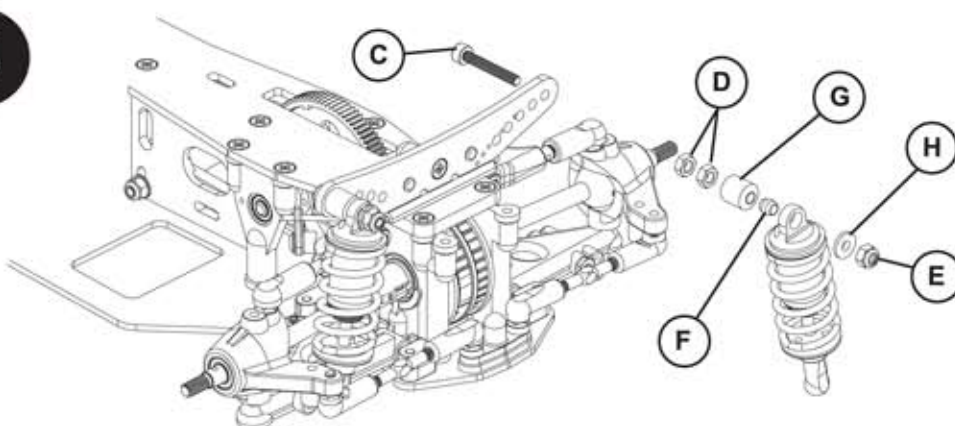
NOTE:
Use the short link when using the upper hole in the suspension mount & the long link when using the lower hole.

Short Long

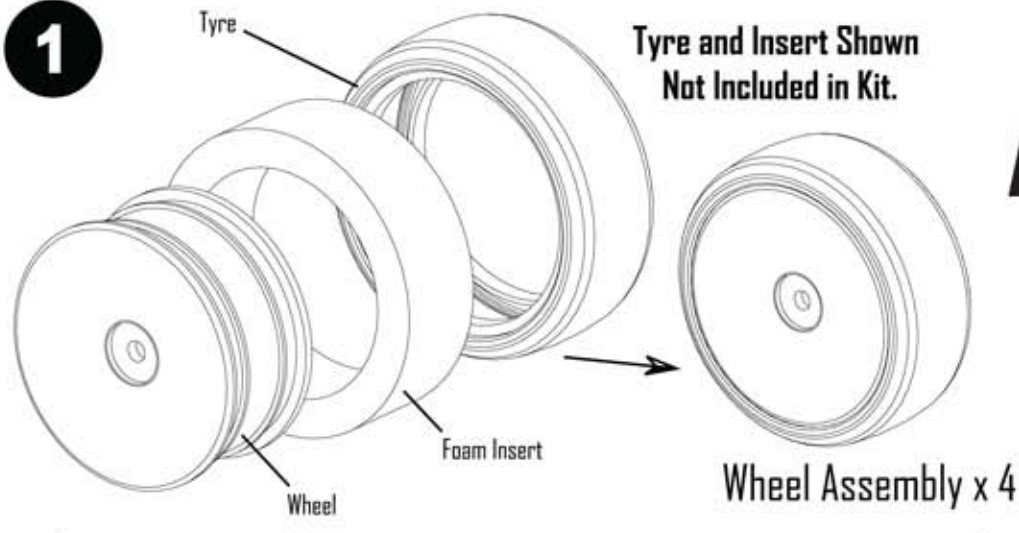
TRACK TIP 15
Don't over tighten the shock fixings **E** or the anti-roll bar screws **A**. They must be allowed to pivot freely as the suspension moves.

NOTE:
Front & Rear mounts are different.

4



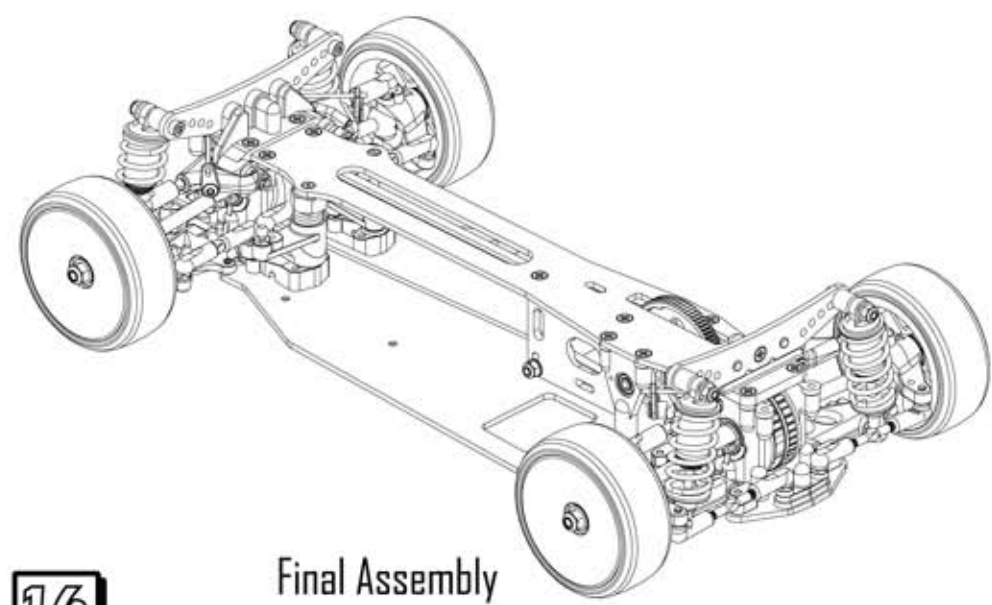
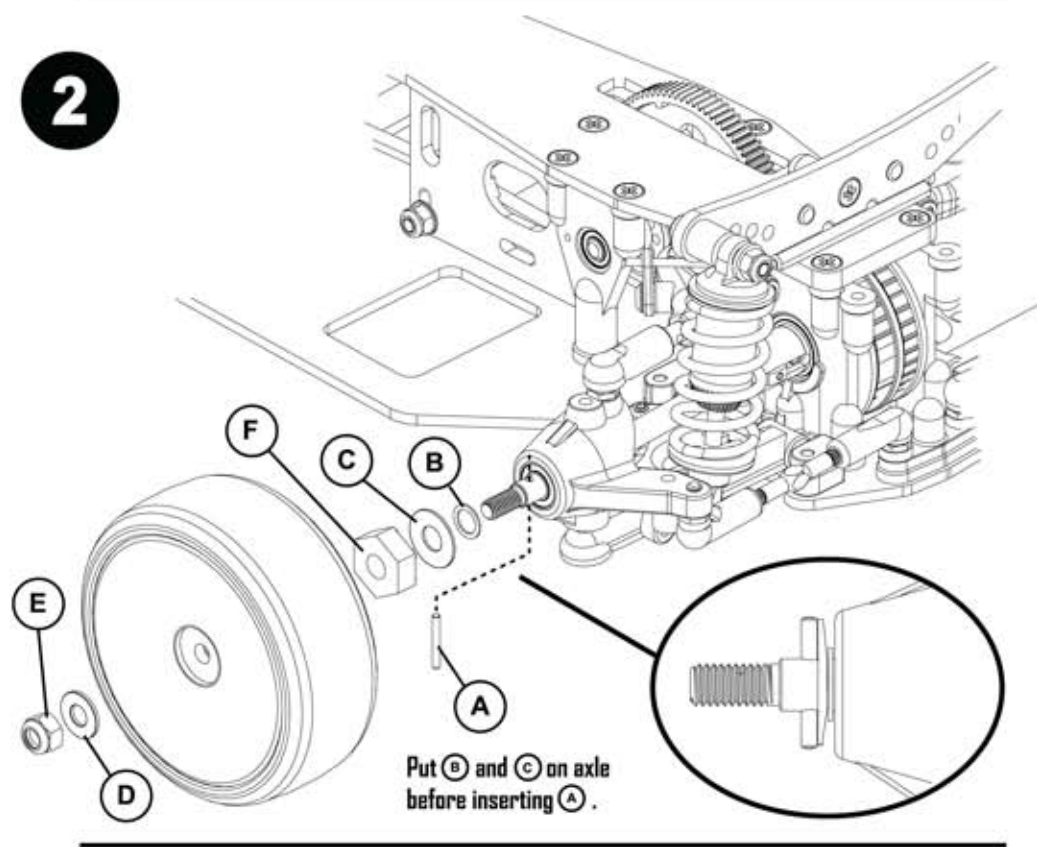
1



BAG 8 ASSEMBLY
Parts required:

- A**  1.5mm x 11.8mm Needle Roller x 4
- B**  Thin Wheel Shim x 4
- C**  Pin Drive Disc Spring x 4
- D**  M4 Steel Washer x 4
- E**  M4 Nyloc Nut x 4
- F**  Pin Drive Hex x 4

2

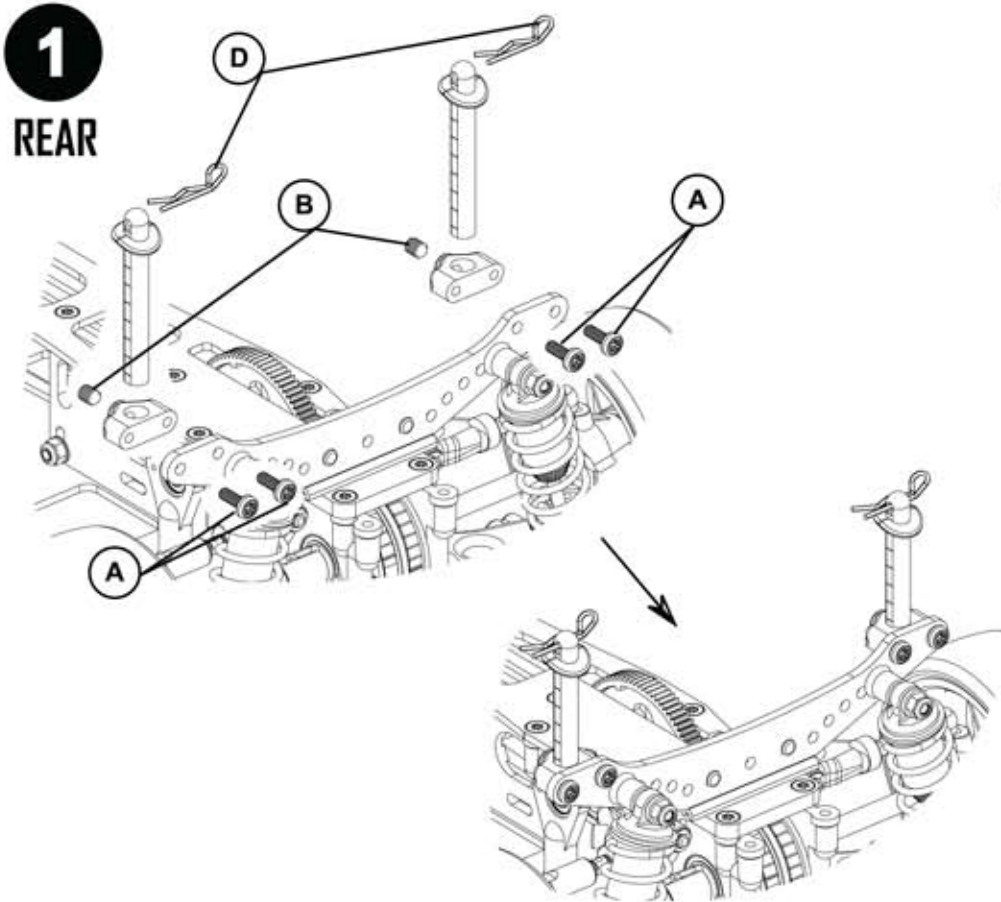


16

Final Assembly

TRACK TIP 16
Take time to seat the foam insert correctly into the tyre before fitting to the wheel. Then carefully stick with superglue.

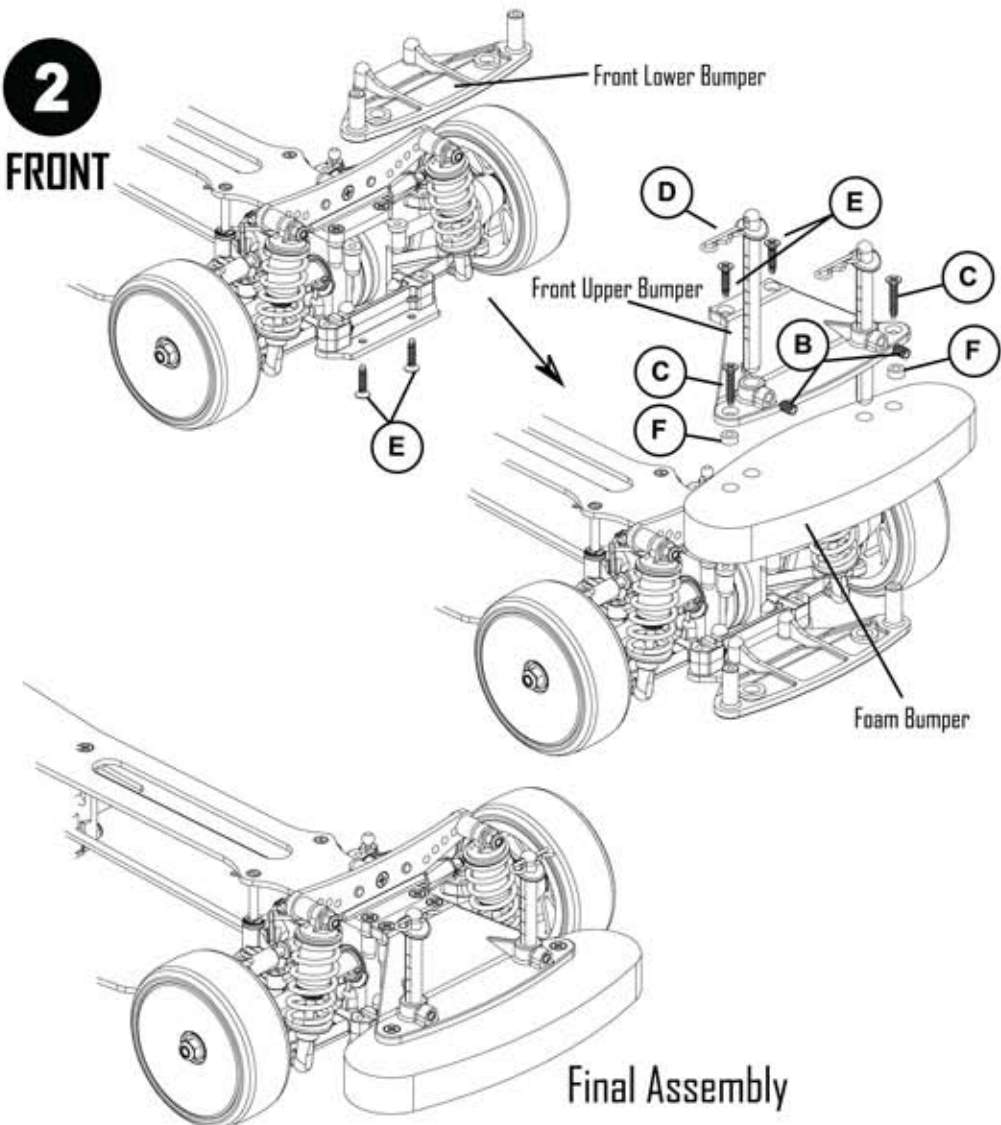
BODY MOUNTS AND BUMPER



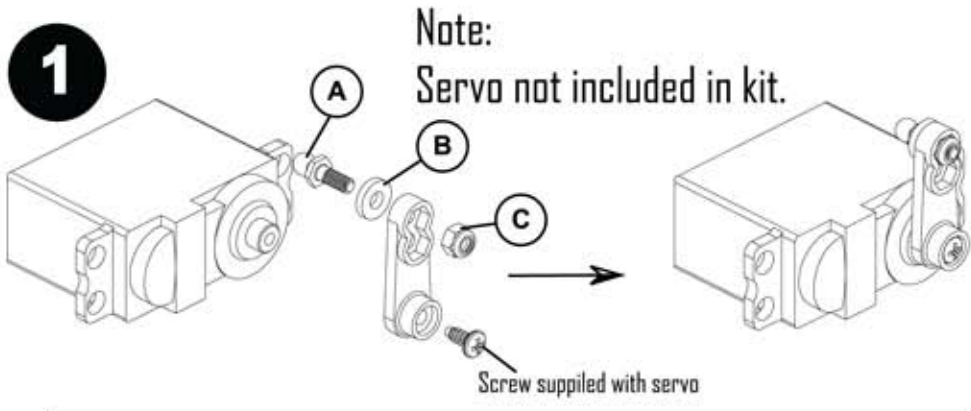
- A** M3 x 8 Pan Torx Head x 4
- B** M4 x 6 Grub Screw x 4
- C** M3 x 16 Csk Torx Head x 2
- D** "R" Clip x 4
- E** M3 x 12 Csk Torx Head x 4
- F** Black Washer 3mmx6mmx2mm

Note: Don't over tighten Grub Screws **(B)**. You may strip the threads in the mouldings.

TRACK TIP 17
Cut the body mounts after you have decided on your bodyshell. It is easier to drill & mount your bodyshell before you paint it.



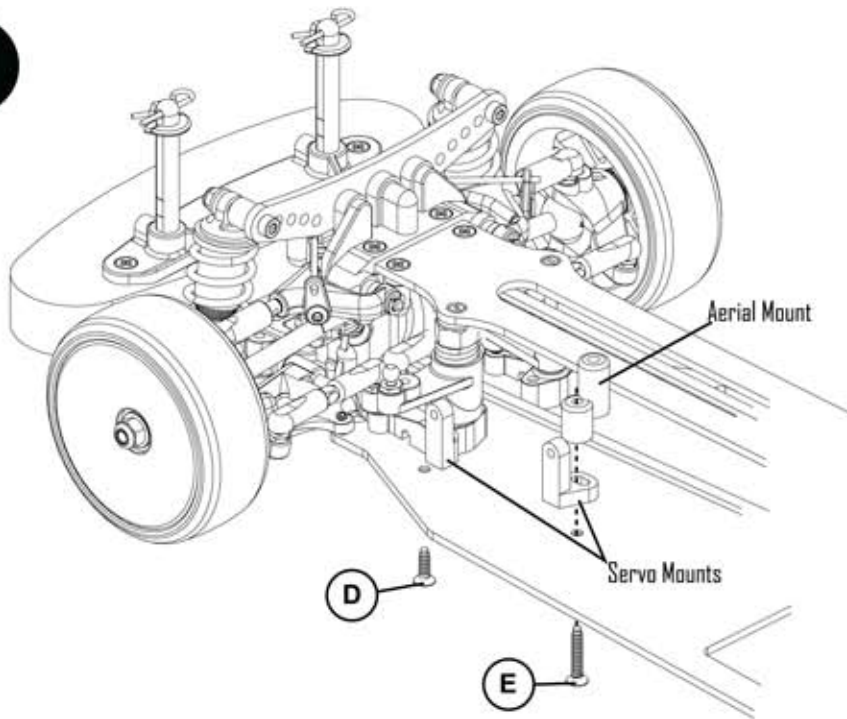
1



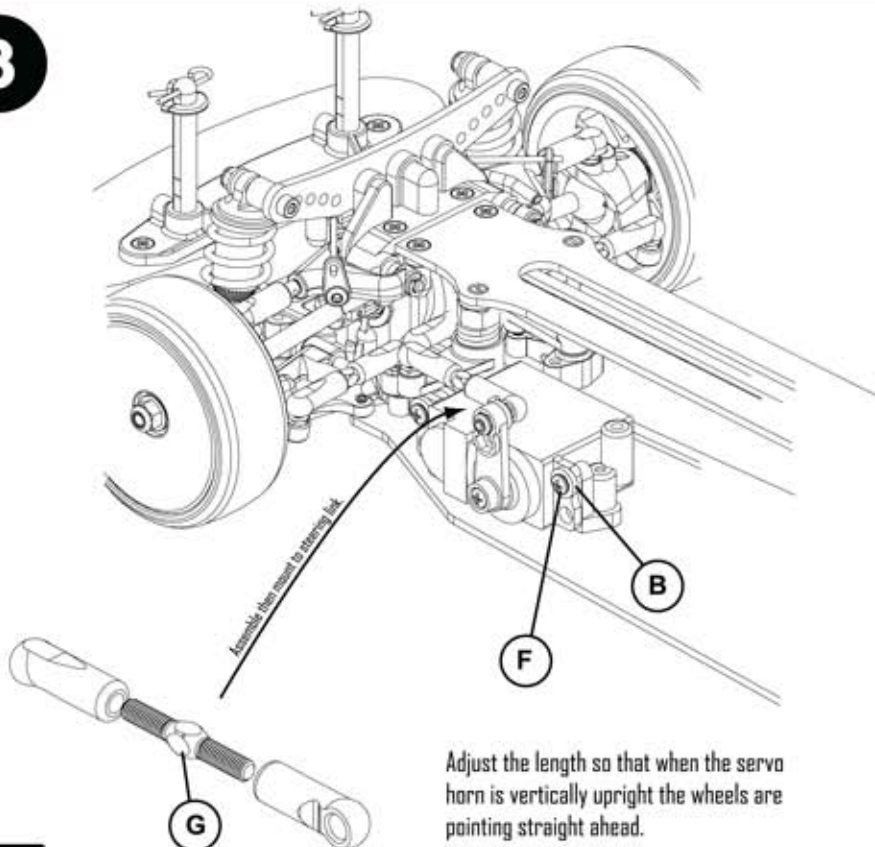
SERVO ASSEMBLY
Parts required:

- A**  Ball Stud Long M3 x 1
- B**  1.6mm Nylon Washer x 3
- C**  M3 Nyloc Nut x 1
- D**  M3 x 10 Csk Torx Head x 1
- E**  M3 x 16 Csk Torx Head x 1
- F**  M3 x 10 Pan TORX Head x 2
- G**  24mm Turnbuckle x 1

2

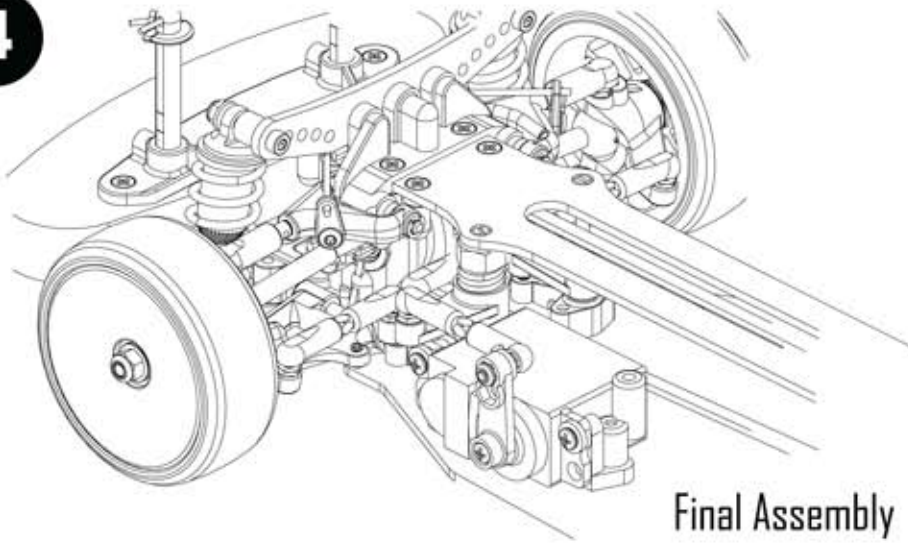


3



TRACK TIP 18
Make sure the servo is at neutral before installing the horn.

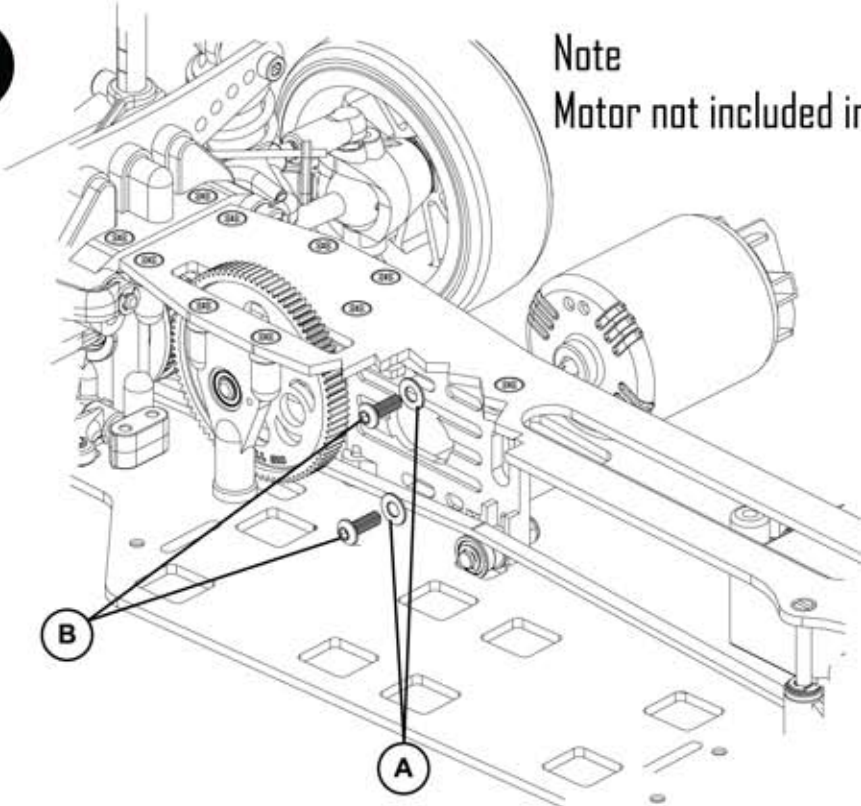
4



MOTOR & PINION
Parts required:

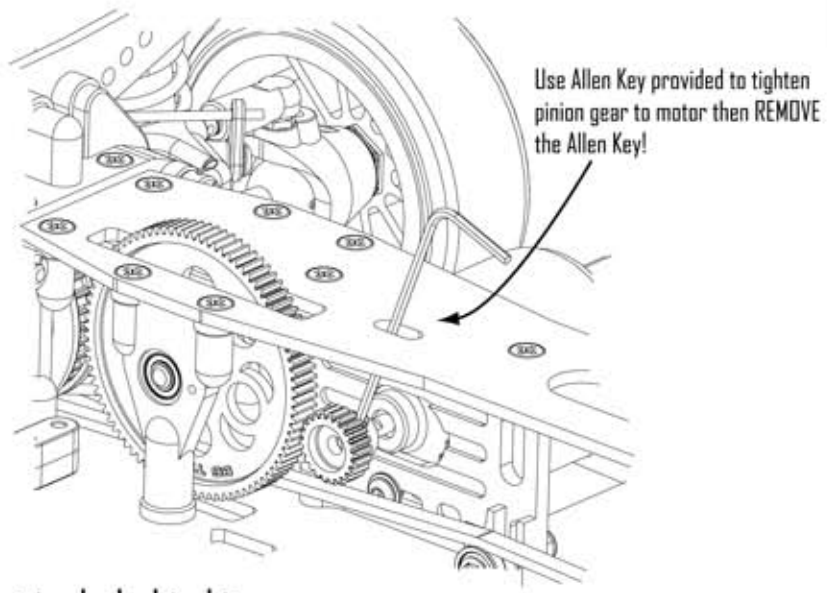
- A**  M3 Steel Washer x 2
- B**  M3 x 8 Button Head x 2

1



Note
Motor not included in kit.

2

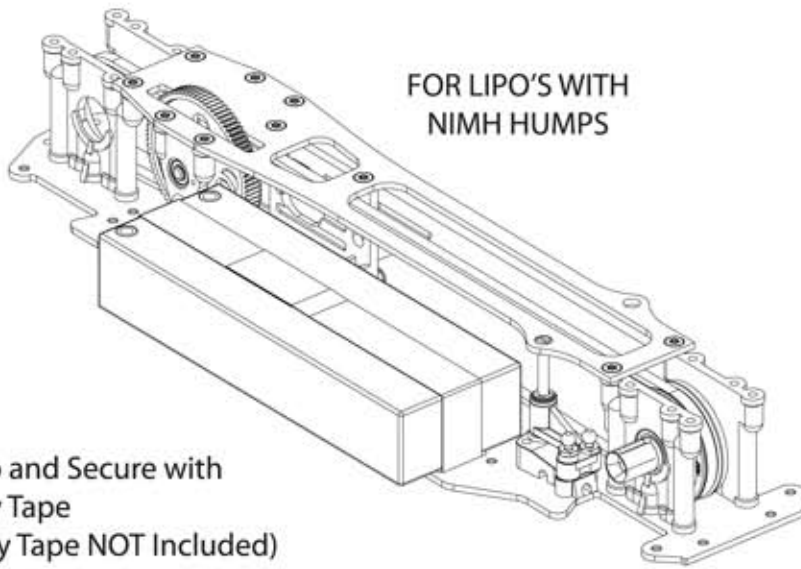


Note:
Pinion not included in kit.

TRACK TIP 19
Rotate the spur gear and check the gear mesh at 3 or 4 different positions, to make sure there are no high spots or excessive play.

1

FOR LIPO'S WITH
NIMH HUMPS



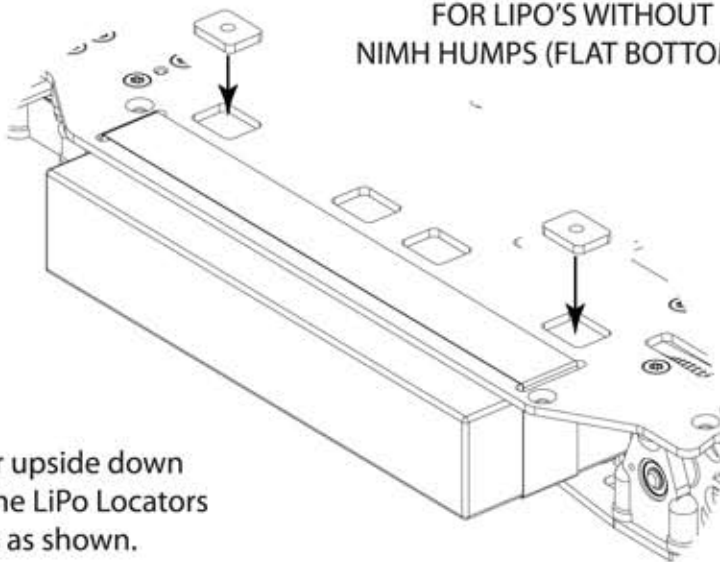
Fit LiPo and Secure with
Battery Tape
(Battery Tape NOT Included)

LiPo Installation

LiPo Installation using
Battery Tape
(NOT Included)

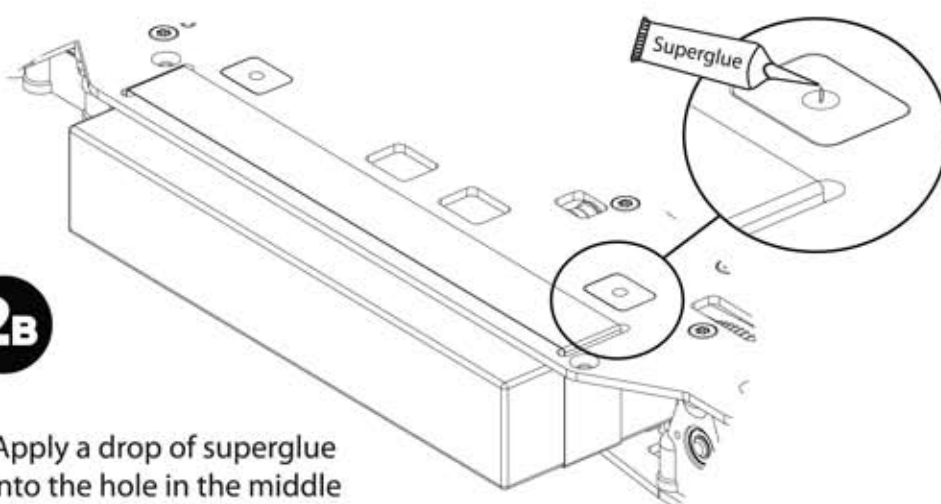
2A

FOR LIPO'S WITHOUT
NIMH HUMPS (FLAT BOTTOMED)



Turn the car upside down
and place the LiPo Locators
in the holes as shown.

2B



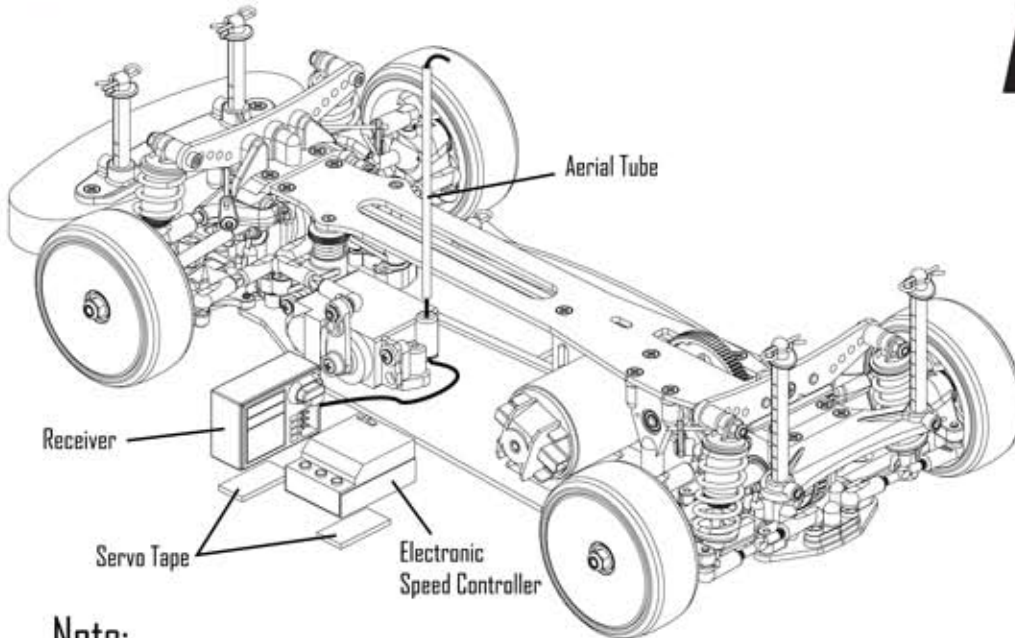
1. Apply a drop of superglue into the hole in the middle of the Locator.
2. Wait for the glue to set then remove LiPo and glue the edges of the Locator for extra security.



AN OPTIONAL BATTERY
MOUNTING SYSTEM
IS AVAILABLE
PLEASE ORDER

U3513 Carbon Fibre LiPo Strap & Posts - Mi4
U3514 Carbon Fibre LiPo Strap - Mi4
U3568 Carbon Fibre LiPo Retainer - Mi4LP
U3569 Carbon Fibre LiPo Battery Locator Micro Mi4LP

1



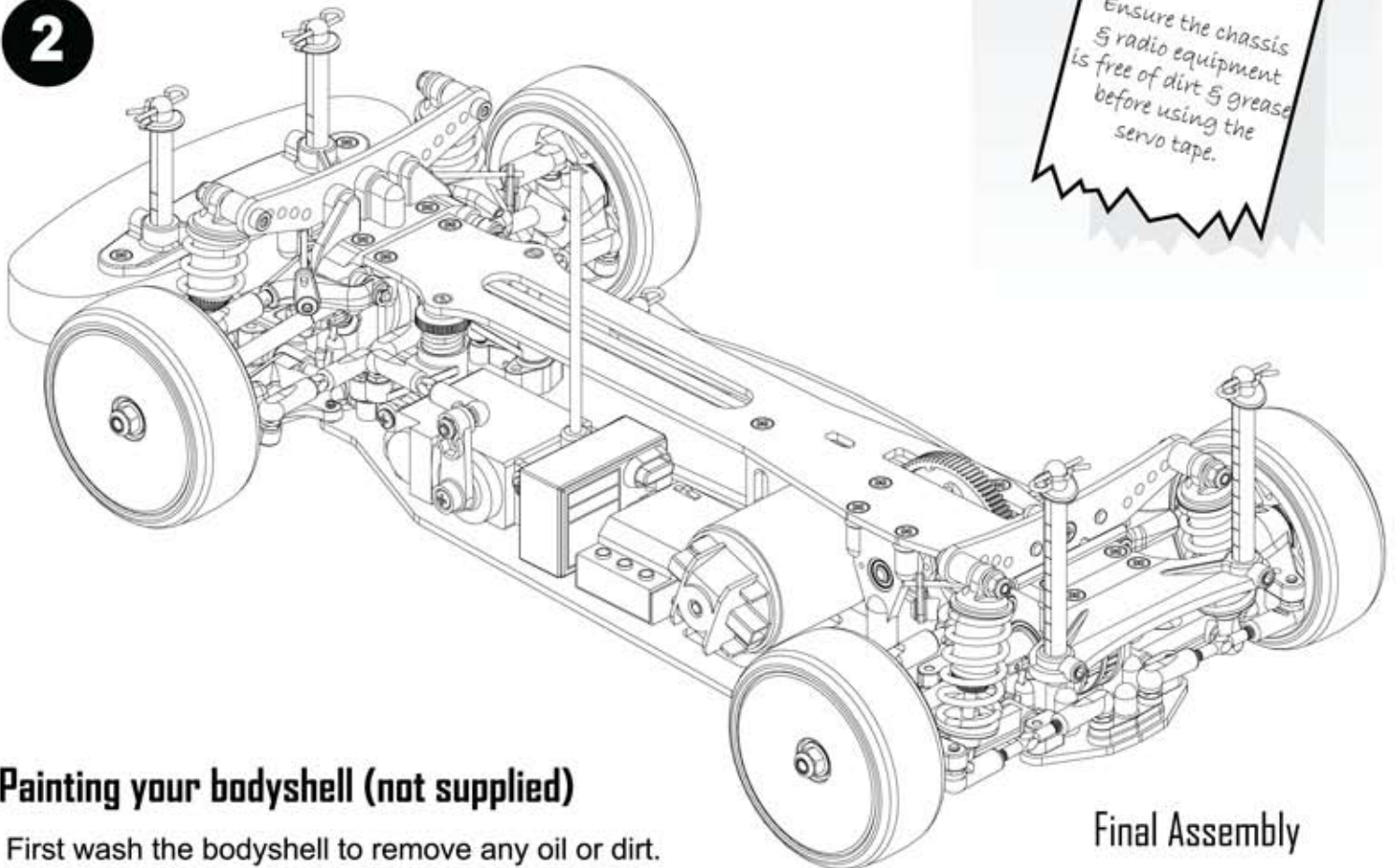
MiG one

RADIO INSTALLATION

Note:
Receiver and Speed Controller Not Included.



2

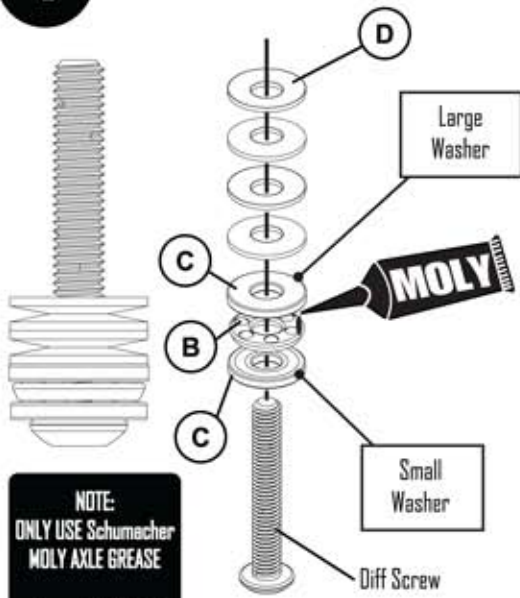


Final Assembly

Painting your bodyshell (not supplied)

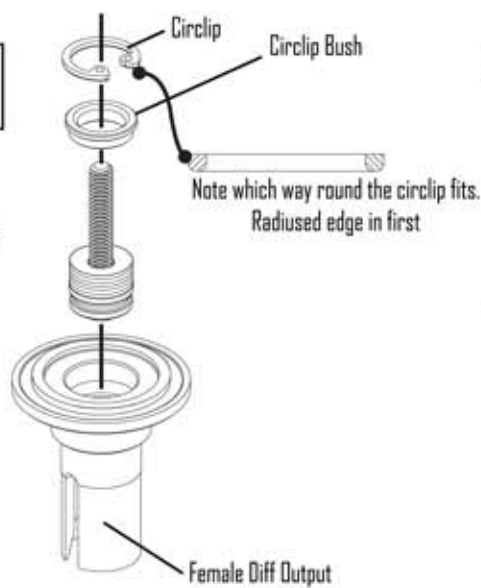
First wash the bodyshell to remove any oil or dirt. Rinse thoroughly. Paint the inside of the bodyshell using only polycarbonate paints. You can obtain a colour scheme by masking off sections with tape. Apply paint and when dry, remove the tape and apply a different colour. Finish your bodyshell using the decals supplied.

1



NOTE:
ONLY USE Schumacher
MOLY AXLE GREASE
Re-order # UI957

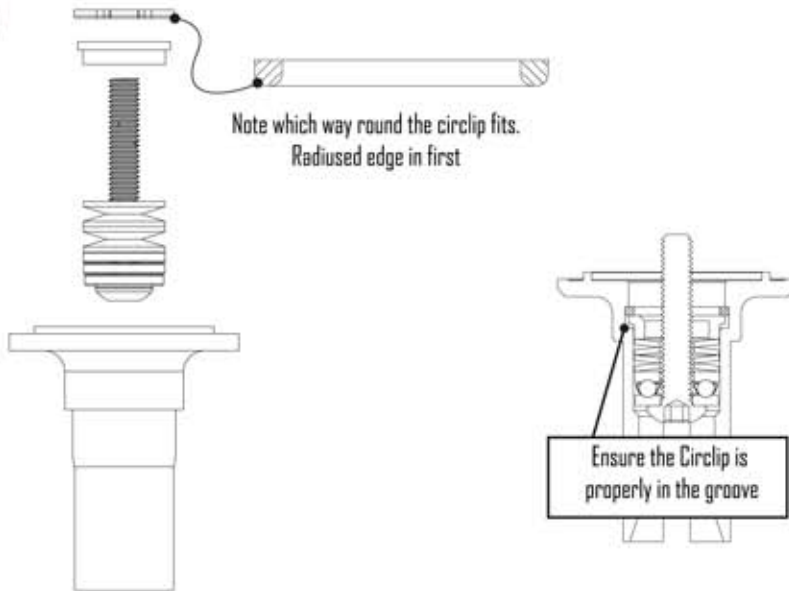
2



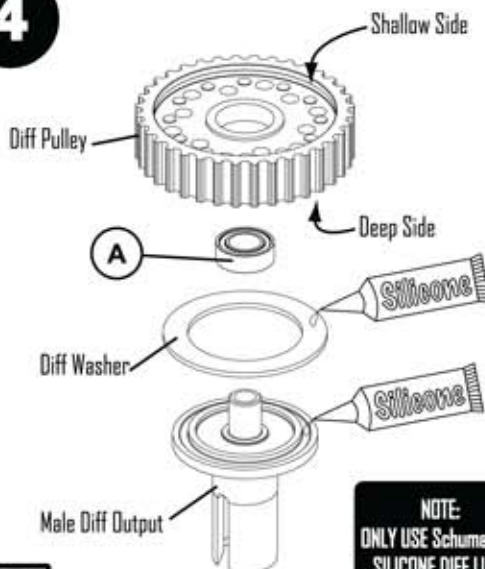
FRONT DIFFERENTIAL SERVICE

- A**  5 x 9 x 3 Ball Race x 1
- B**  Thrust Race x 1
- C**  Thrust Washer x 2
(1 x small, 1 x large)
- D**  Diff Disc Spring x 4

3



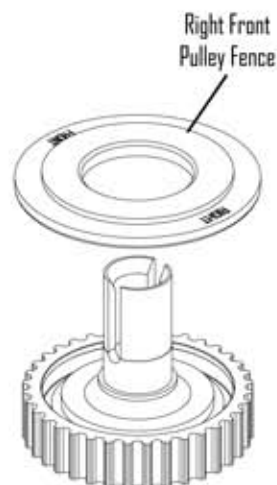
4



22

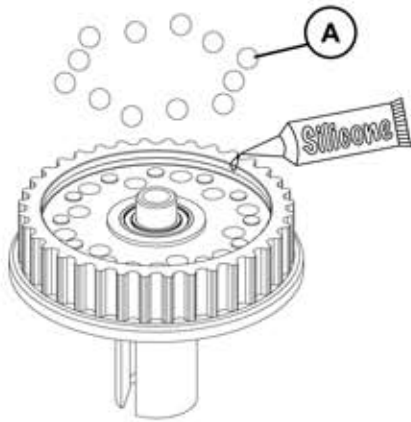
NOTE:
ONLY USE Schumacher
SILICONE DIFF LUBE
Re-order # UI301

5

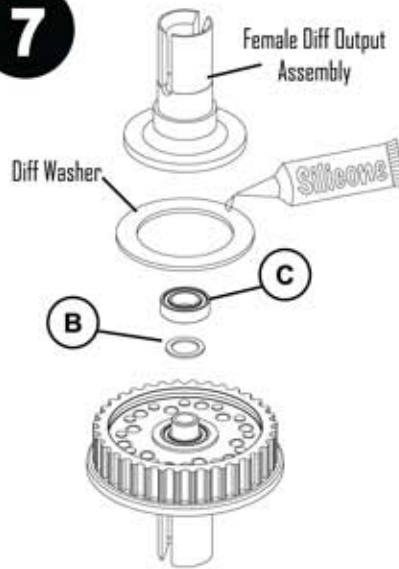


TRACK TIP 22
Only use Schumacher greases in your diffs. We have done many years of testing & we know it's the BEST!

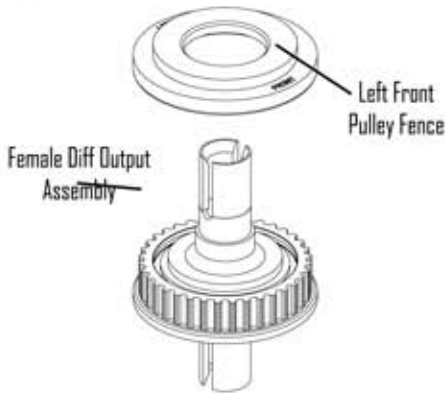
6



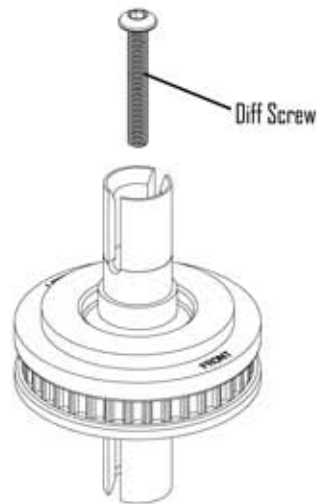
7



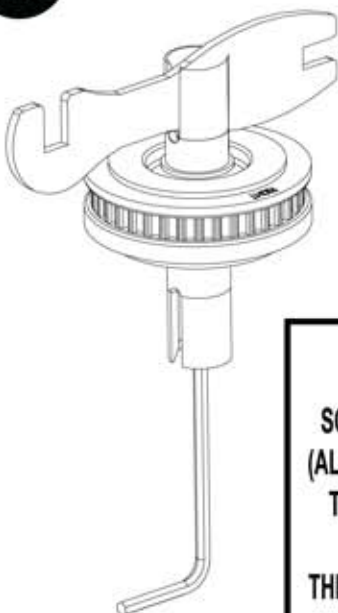
8



9



10



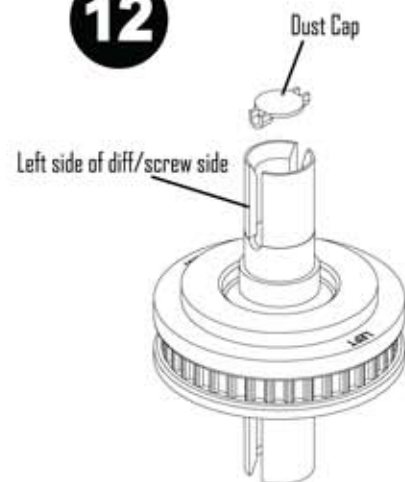
**DIFF SETTING
SCREW IN UNTIL TIGHT
(ALL DISC SPRINGS FLAT)
THEN UNDO 1/4 TURN.

THEN LOCK THE SETTING
WITH THE GRUB SCREW.**

11



12

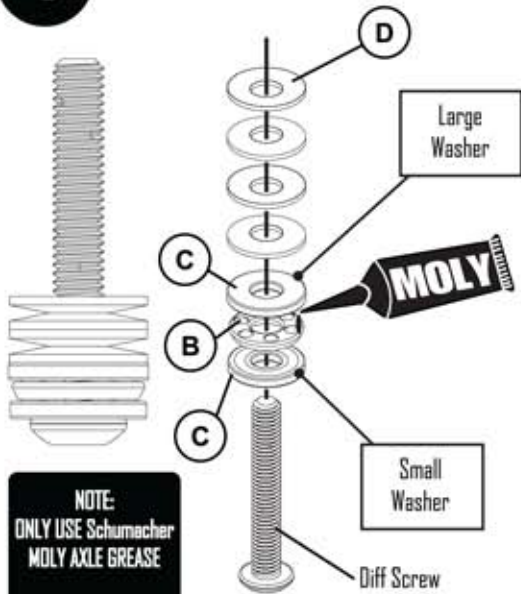


FRONT DIFFERENTIAL SERVICE

- A**  2.5mm Dia Diff Ball x 12
- B**  Thin Shim x 1
- C**  5 x 9 x 2.5 Open Ball Race x 1
- D**  M3 x 4 Grub Screw x 1

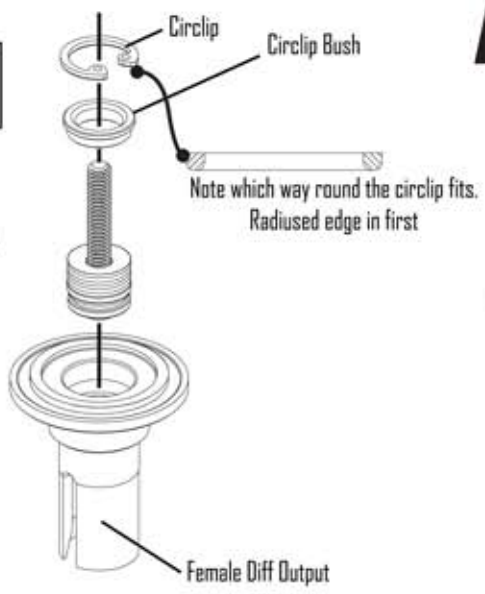
TRACK TIP 23
Using the dust cap will help give the maximum life to your diff.... USE IT!

1



NOTE:
ONLY USE Schumacher
MOLY AXLE GREASE
Re-order # UI957

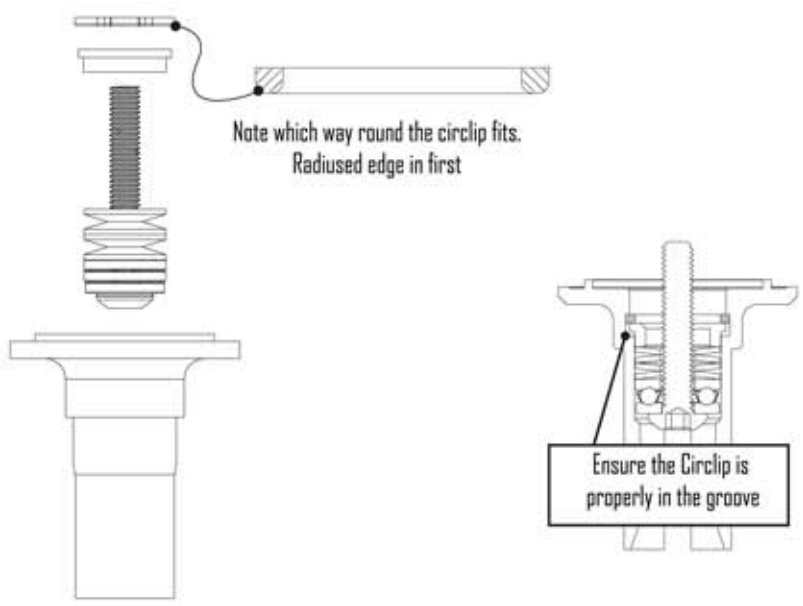
2



REAR DIFFERENTIAL SERVICE

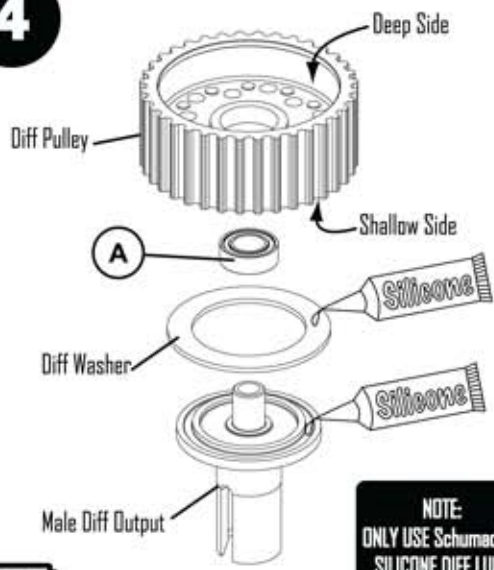
- A**  5 x 9 x 3 Ball Race x 1
- B**  Thrust Race x 1
- C**  Thrust Washer x 2
(1 x small, 1 x large)
- D**  Diff Disc Spring x 4

3



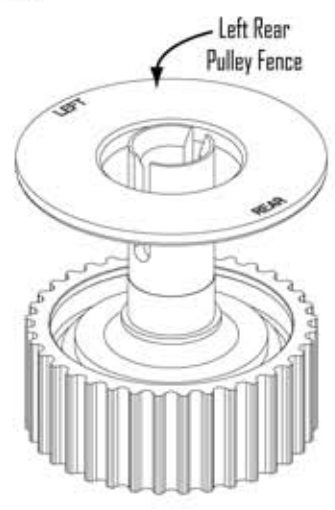
Ensure the Circlip is properly in the groove

4



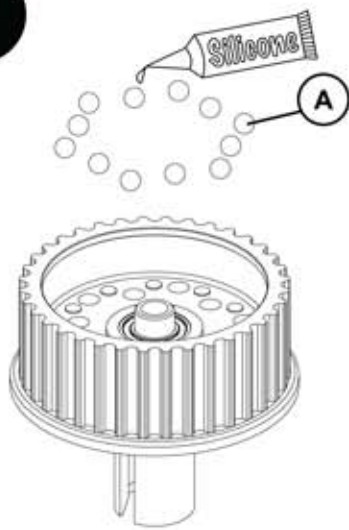
NOTE:
ONLY USE Schumacher
SILICONE DIFF LUBE
Re-order # UI301

5

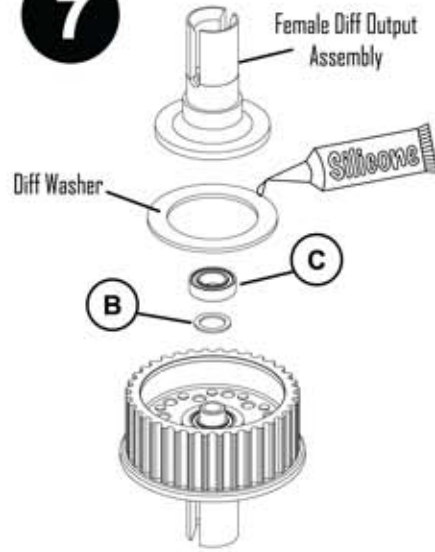


TRACK TIP 24
Only use silicone grease on the large diff balls & Moly grease on the small balls!

6



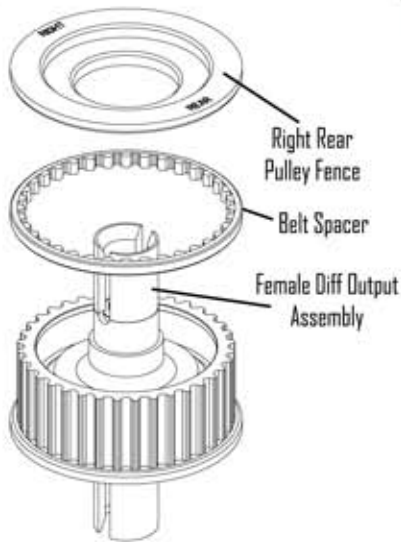
7



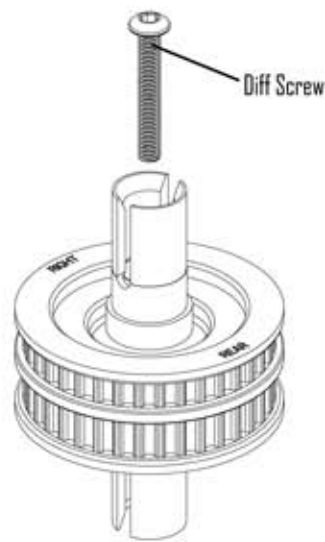
REAR DIFFERENTIAL SERVICE

- A**  2.5mm Dia Diff Ball x 12
- B**  Thin Sim x 1
- C**  5 x 9 x 2.5 Open Ball Race x 1
- D**  M3 x 4 Grub Screw x 1

8



9



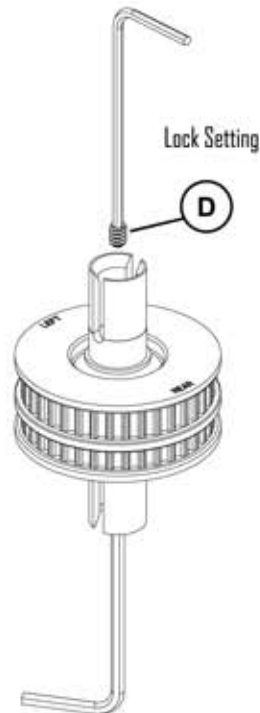
TRACK TIP 25
Using the Schumacher 'Fibre-Tool' to hold the output doesn't damage the output or your fingers!

10

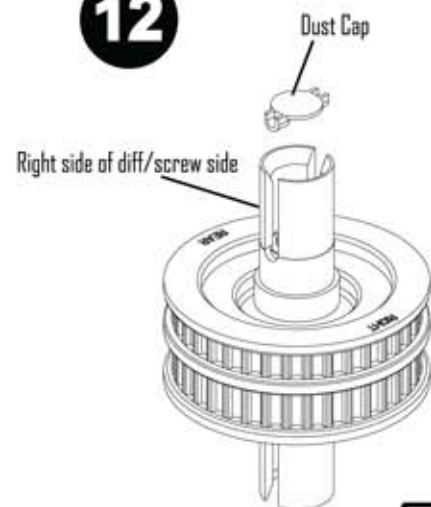


DIFF SETTING SCREW IN UNTIL TIGHT (ALL DISC SPRINGS FLAT) THEN UNDO 1/4 TURN. THEN LOCK THE SETTING WITH THE GRUB SCREW.

11



12



TRACK SETTINGS AND GEAR RATIO CHARTS

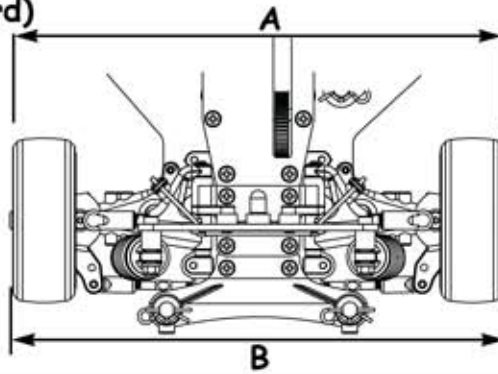
REAR TOE-IN/OUT (Out-board)

The rear toe-in is set by adjusting the turnbuckles at the rear of the car.

Toe-In = A less than B
Toe-Out = A greater than B

2.5° toe-in each side is a good standard setting. This offers a good level of rear grip.

Reducing the rear toe-in offers better steering response and more straight line speed, but less stability

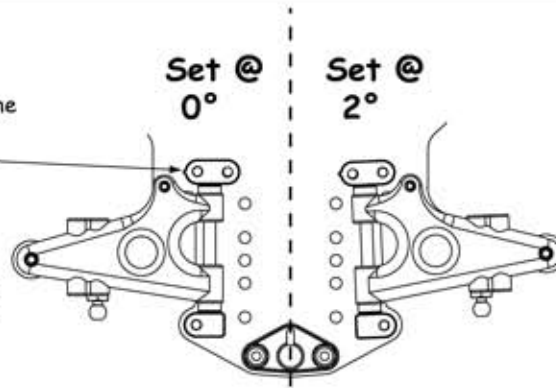


REAR TOE-IN (In-board)

The rear In-Board Toe-In is set by fitting the pivot blocks (see page 5 ● & ●). With the ridge facing in or out.

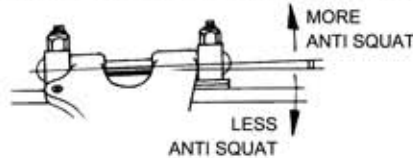
Facing in = 2° Toe-In
Facing out = 0° Toe-In

0° Toe-In each side is the standard setting.
2° Toe-In each side offers better rear end grip, but less steering response.



ANTI SQUAT & SUSPENSION DROOP

The car has 0° anti squat as standard. More anti squat will give more on power traction, but less off power traction, however too much will make the car unstable when turning into high speed corners. With 0° anti squat the steering will be precise & positive. On slippery tracks add anti squat.



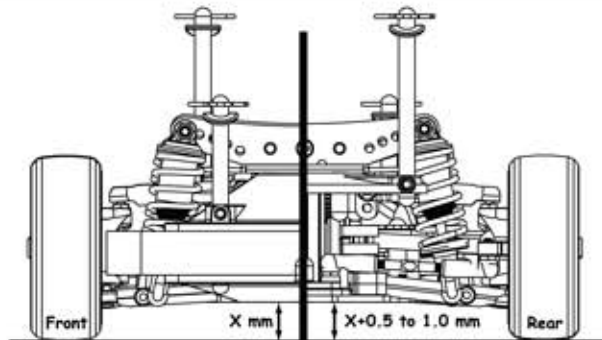
The suspension droop can be adjusted using the grub screw in the lower wishbones. Less droop improves steering response. More droop increases rear grip.

RIDE HEIGHT

In general always run the car as low as possible, without the chassis grounding out, as it rolls into corners.

Run the front 0.5mm to 1.0mm lower than the rear, to give more steering.

A good starting point is 5.5mm at the front and 6.0mm at the rear.

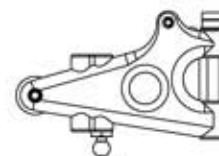
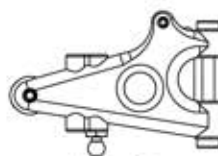
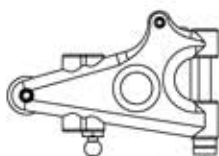


WHEELBASE (set on REAR wishbones)

The length of the wheelbase is set by fitting the spacers "G" (see page 5 ●). In different positions.

In front of the wishbone = Long. Either side of the wishbone = Medium. Behind the wishbone = Short

Use spacers to maintain the wheelbase length after adjusting the Castor or Toe-In/Out. In general a longer wheelbase will offer more steering.



PULLEYS 20/36 Maximum Tooth Sum = 131 Minimum Tooth Sum = 108 1.8 : 1 INTERNAL RATIO

	95	92	89	86	83
15	11.40				
16	10.69	10.35			
17	10.06	9.74			
18	9.50	9.20			
19	9.00	8.72	8.43		
20	8.55	8.28	8.01		
21	8.14	7.89	7.63		
22	7.77	7.53	7.28	7.04	
23	7.43	7.20	6.97	6.73	
24	7.13	6.90	6.68	6.45	
25	6.84	6.62	6.41	6.19	5.98
26	6.58	6.37	6.16	5.95	5.75
27	6.33	6.13	5.93	5.73	5.53
28	6.11	5.91	5.72	5.53	5.34
29	5.90	5.71	5.52	5.34	5.15
30	5.70	5.52	5.34	5.16	4.98
31	5.52	5.34	5.17	4.99	4.82
32	5.34	5.18	5.01	4.84	4.67

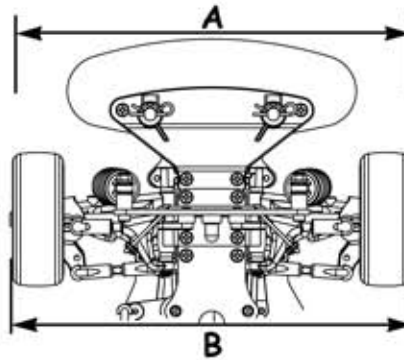
FRONT TOE-IN (Out-board)

The front toe-in is set by adjusting the steering trackrod turnbuckles.

Toe-In = A less than B
 Toe-Out = A greater than B

Toe-in will give a more stable car, but will give less sharp turn in. We recommend to start at about 1° each side. Maximum 2° each side.

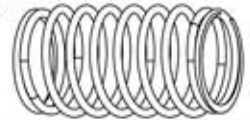
Toe-out will give the opposite, less stability with sharper turn in to the corners.



TRACK SETTINGS

SPRINGS

The spring rate controls the suspension stiffness. Fit spring spacers only to change the ride height. They DO NOT alter the suspension stiffness. On slippery or bumpy tracks use soft to medium rate springs, on flat or high grip tracks run medium to hard rate springs.



FRONT TOE-OUT (In-board)

The front In-board toe-out is set by fitting the front strap (see page 90) with the 2° mark up or down.

2° mark showing (up) = 0°
 2° not showing (down) = 2° toe-out.

With the In-board position set to 2° the steering will be smooth and progressive, when set to 0° the steering is more aggressive.



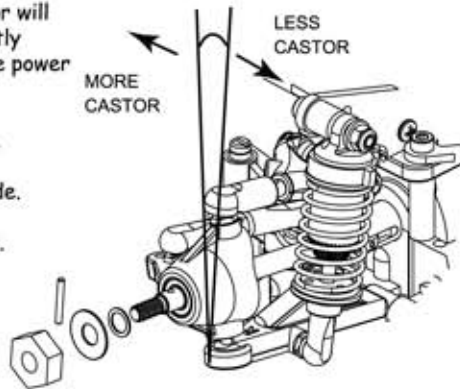
FRONT CASTOR

The front castor can be altered by moving the two washers on the top wishbone pivot pin. Less castor will give a quicker steering response, but could lead to power on understeer. More castor will give the opposite, slightly slower turn in, but more power on steering.

11° = 2 washers at rear.

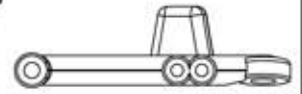
8.5° = 1 washer each side.

6° = 2 washers at front.



LOWER SHOCK POSITION

Inner (standard) position is best for most tracks & conditions. The outer position is good on VERY high grip tracks.



SHOCK BRACKETS

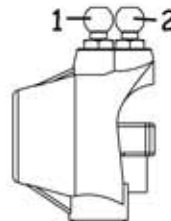
Vertical shock absorbers make the car react sharply to driver inputs. A laydown shock offers a softer feel to the driver.



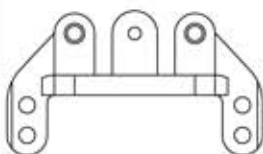
HUB CARRIER

Position 1 offers an aggressive initial steering response. Position 2 (standard) offers a softer initial steering response.

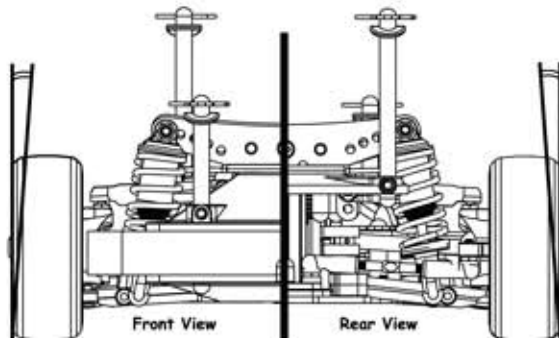
Use hole 1 for a faster, more aggressive steering response and more lock. Use hole 2 for smoother more proportional steering. Hole 2 is generally better on high grip tracks.



UPPER SUSPENSION MOUNT

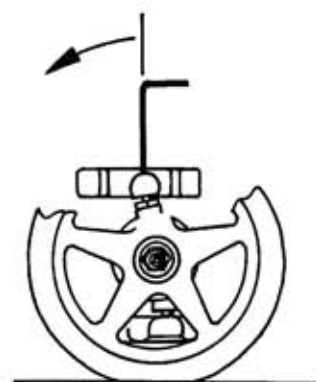
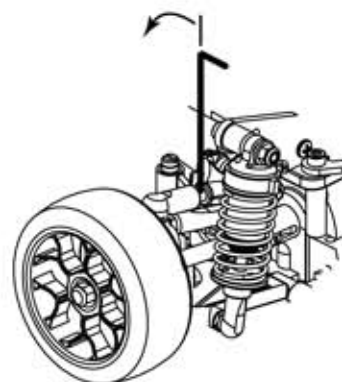


The upper (standard) hole makes the car smooth and predictable. The lower hole can offer better grip, but with a much less predictable breakaway.



FRONT & REAR CAMBER

Car as standard will have 4° negative camber (the top of the wheels lean inward). Set the camber to 1° negative by adjusting the top wishbone turnbuckle. To reduce camber look at wheel face on & turn allen key anti-clockwise as shown above - This is the same for all four wheels. With maximum camber (4°) the car will have high levels of grip, but there may be the possibility of sudden breakaway in corners. Reducing the camber gives a more progressive slide, but may give less grip. See set up sheet.

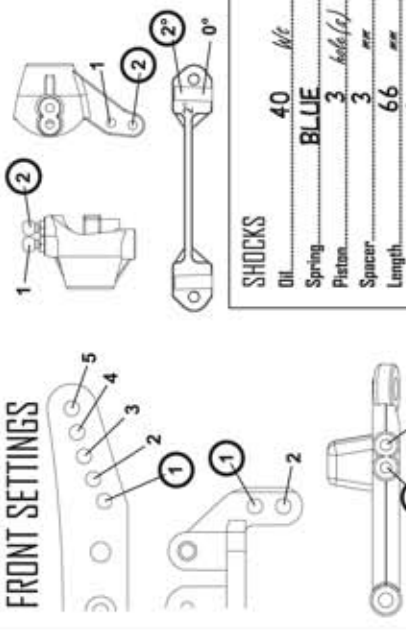




Driver: TEST DRIVER
 Date: _____
 Meeting: TEST
 Best Time: _____

Track details:
 Carpet
 Concrete
 Tarmac
 Tight
 Open
 Outdoor
 Other: _____

FRONT SETTINGS



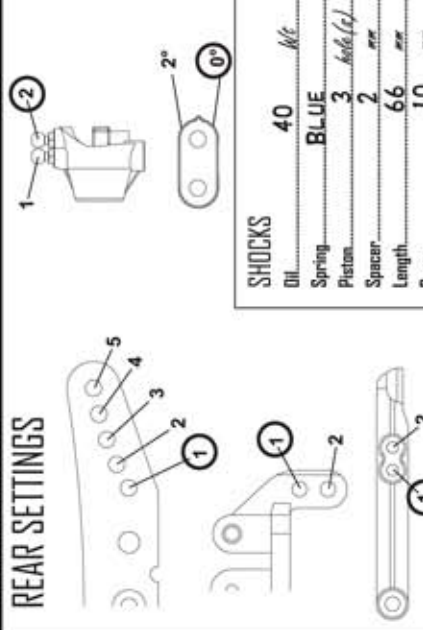
Hub Carrier... elastic *ally (High/Low)*
 Anti-Roll Bar... YES
 Caster... 8 degrees
 Toe-In/Dutboard... -1 degrees
 Ride Height... 5 mm
 Camber... -1.5 degrees
 Lower Wishbone... Forward *Middle* Rear
 Front Driveshafts... elastic *steel*

Notes: KIT STANDARD CENTRE TRACK ROD

SHOCKS

Oil	40	Wt
Spring	BLUE	
Piston	3	hole(s)
Spacer	3	mm
Length	66	mm
Drop	8	mm

REAR SETTINGS



Hub Carrier... elastic *ally (High/Low)*
 Anti-Roll Bar... YES
 Anti/Pro Squat... NO
 Toe-In (Out Board)... 2.5 degrees
 Ride Height... 5.5 mm
 Camber... -1.5 degrees
 Lower Wishbone... Forward *Middle* Rear
 Rear Driveshafts... elastic *steel*

Notes:

SHOCKS

Oil	40	Wt
Spring	BLUE	
Piston	3	hole(s)
Spacer	2	mm
Length	66	mm
Drop	10	mm

Drivers Comments:

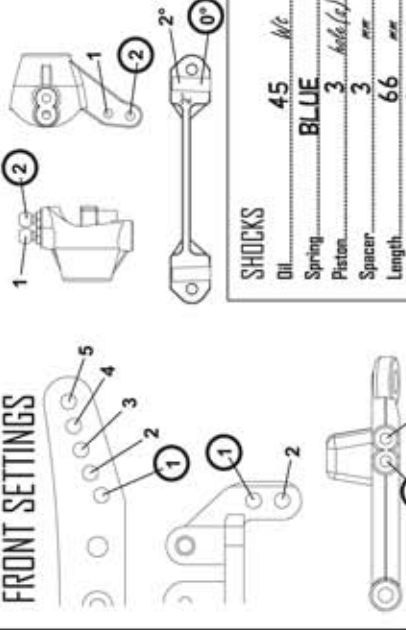
Motor: GM 10.5T
 Bearing: Pin 26 *inch* Spur 92 *inch*
 Bodyshell: EAST COAST SPEED 6
 Front Tyres: SOREX 32
 Rear Tyres: SOREX 32
 Front Inserts: YELLOW
 Rear Inserts: YELLOW
 Tyre Additive: Yes / No *Type* NOSRAM OUTDOOR
 E.S.C.: GMI 20
 Cells: GM
 Receiver: KO
 Servo: KO
 Notes: _____



Driver: TEST DRIVER
 Date: _____
 Meeting: TEST
 Best Time: _____

Track details:
 Carpet
 Concrete
 Tarmac
 Tight
 Open
 Outdoor
 Other: _____

FRONT SETTINGS



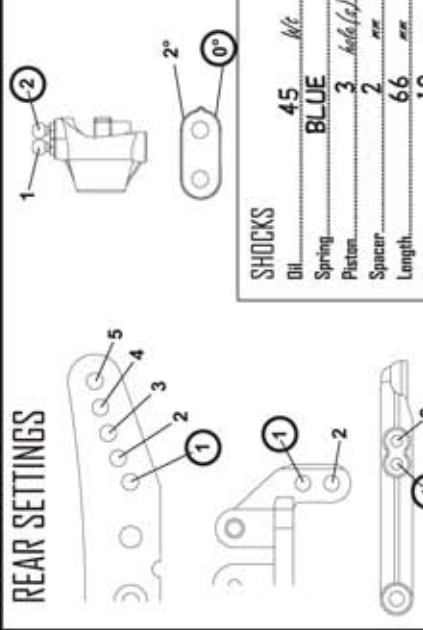
Hub Carrier... elastic *ally (High/Low)*
 Anti-Roll Bar... YES
 Caster... 8.5 degrees
 Toe-In/Dutboard... -1 degrees
 Ride Height... 5 mm
 Camber... -1.5 degrees
 Lower Wishbone... Forward *Middle* Rear
 Front Driveshafts... elastic *steel*

Notes: KIT STANDARD CENTRE TRACK ROD

SHOCKS

Oil	45	Wt
Spring	BLUE	
Piston	3	hole(s)
Spacer	3	mm
Length	66	mm
Drop	8	mm

REAR SETTINGS



Hub Carrier... elastic *ally (High/Low)*
 Anti-Roll Bar... YES
 Anti/Pro Squat... NO
 Toe-In (Out Board)... 3 degrees
 Ride Height... 5.5 mm
 Camber... -1.5 degrees
 Lower Wishbone... Forward *Middle* Rear
 Rear Driveshafts... elastic *steel*

Notes:

SHOCKS

Oil	45	Wt
Spring	BLUE	
Piston	3	hole(s)
Spacer	2	mm
Length	66	mm
Drop	10	mm

Drivers Comments:

Motor: GM 13.5T
 Bearing: Pin 25 *inch* Spur 92 *inch*
 Bodyshell: EAST COAST SPEED 6
 Front Tyres: SOREX 28
 Rear Tyres: SOREX 28
 Front Inserts: JB FOAM
 Rear Inserts: JB FOAM
 Tyre Additive: Yes / No *Type* CS HIGH
 E.S.C.: GMI 20
 Cells: GM
 Receiver: KO
 Servo: KO
 Notes: _____



ELECTRIC - TOURING CARS

CHASSIS PARTS

- U1042 Aerial Mount - Universal
- U119 Aerial Tube - Pack 4
- U2231 Servo Horns
- U2244 Servo Mounts (pr)
- U2436 Top Deck; S1 Composite - Mi1
- U2438 Front Shock Mount; S1 - Mi1
- U2456 Foam Bumper - Mi1
- U2480 Body Posts and R Clips (pk 4)
- U3802 Chassis; S1 Composite - Mi1
- U3804 Rear Shock Mount; S1 - Mi1
- U3806 Bumper and Body Mounts - Mi1
- U3807 Instr Manual - Mi1
- H1039 Battery Tape - Natural 50m x 17mm

BODYSHELLS AND DECALS

- EC16283121 East Coast - Body; is250 190mm
- EC16283122 East Coast - Body; Euro-R 190mm
- EC16283123 East Coast - Body; 320si 190mm
- EC16283129 East Coast - Body; Evo9x 190mm
- EC162832D6 East Coast - Body; 350Z 190mm
- EC162832D8 East Coast - Body; RX7 190mm
- EC162832D9 East Coast - Body; S15 190mm
- EC168M609 East Coast Body; 2009 M-Speed 6 - 190mm
- EC168M609L ECLight Body; 2009 M-Speed 6 - 190mm
- EC38826B East Coast - Half Paint; Blue; Speed 6 190mm
- EC38826R East Coast - Half Paint; Red; Speed 6 190mm
- U3810 Decal Sheet - Mi1 (pk3)

SUSPENSION

- U1426 Pivot Pin; grooved 29mm x 1/8 (pr)
- U1430 Turnbuckle Adjuster - 39mm (pr)
- U1440 Pro Pin; grooved 1/8 x 25mm (pr)
- U1445 Steering Posts and Washer - 2000
- U1446 Servo Saver Metal Parts - 2000 Series
- U1481 Front Steering Post and Pivot Blocks
- U1704 Ball Grippa Sockets (pk 8)
- U1877 Hi-Tensile Pivot Ball Screw - SST(pr)
- U1881 Steering Levers - SST2000
- U1884 Rear Wishbones - SST2000 (pr)
- U1919 Anti Roll Bar Set- SST2000 (pr)
- U2020 Front Wishbone; 7.5-13.5deg - SST (pr)
- U2384 Hub Carrier; Vert King Pin Option - SST
- U2450 Suspension Pivots and Blocks - Mi1
- U2467 Front Upper Wishbones - Mi1
- U2468 Rear Upper Wishbones - Mi1
- U2477 Pivot Pin; plain 57mm x 1/8
- U2478 Pivot Pin; plain 45mm x 1/8
- U2479 Suspension and Roll Bar Mount - Mi1
- U2485 Centre Track Rod - Mi1
- U2564 Upper Suspension Mount - Fusion
- U2581 Rear Hub Carrier; 30mm wheel - R12 (pr)
- U750 Ball Grippa Joints-Short Stud 8prs
- U796 Turnbuckle Adjuster - 24mm (pr)
- U851 Ball Grippa Joints - Long Stud 8prs

SHOCK ABSORBERS

- U1557 Ultra-Short Shock Rod (pr)
- U1558 Purple Ultra-Short Shock Body (each)
- U1559 Purple Ultra-Short Shock Absorbers (pr)
- U1818 Purple Alloy Shock Seal Housing (pr)
- U2143 One Piece Shock Pistons - 4 sets of 3
- U2292 Purple Alloy Threaded U/Sh Shock Body
- U613 Spring Stop and Spacer Mouldings (pr)
- U835 Vari Shock Seal Pack (pr)

- K115 Mi1 - 4WD Touring Car Kit
- K116 Mi1 - 4WD Touring Car Assembled

SHOCK OIL

- G020 Pure Silicone Shock Oil - 20w
- G025 Pure Silicone Shock Oil - 25w
- G030 Pure Silicone Shock Oil - 30w
- G035 Pure Silicone Shock Oil - 35w
- G040 Pure Silicone Shock Oil - 40w
- G045 Pure Silicone Shock Oil - 45w
- G050 Pure Silicone Shock Oil - 50w
- G055 Pure Silicone Shock Oil - 55w
- G060 Pure Silicone Shock Oil - 60w

SPRINGS

- U1921 Spring Tuning Set - Ultra Short Touring (3 prs)
- U1924 Spring; Blue Ultra Short 15 (pr)
- U1925 Spring; Red Ultra Short 20 (pr)
- U3245 Spring; Gold Ultra Short 25 (pr)

TRANSMISSION

- U1894 83T Whisper Gear - 48 D.P.
- U1895 M3x8mm Button Screws and Washers pk4
- U1918 Spare Blades
- U1954 Pro - Thrust Bearing
- U2033 Driveshaft Bone; Plastic - Blade Type; small UJ pr
- U2150 Pin Axle and UJ - Plastic D/Shaft - SST
- U2152 Wheel Hex ; pin axle - SST (pk 4)
- U2153 Spacers and Pins - pin drive - SST (4 sets)
- U230 92T Whisper Gear - 48 D.P.
- U231 89T Whisper Gear - 48 D.P.
- U232 86T Whisper Gear - 48 D.P.
- U2433 Front Belt; Ultra Flex - Mi1
- U2434 Rear Belt; Black - Mi1
- U2445 Pulleys; Fr; Rr; 20t - Mi1
- U2446 Alloy Motor Mount - Mi1
- U2447 Layshaft - Mi1
- U2448 Belt Tension Idler Post - Mi1
- U2449 Diff and Layshaft Mount Set - Mi1
- U2481 Pulley Fences - Mi1
- U2483 Rear Belt; Grey Stock 27t
- U2573 Pro-Diff Screw Set
- U3138 Alloy Diff Output; Male - Mi4
- U3139 Alloy Diff Output; Female - Mi4
- U3140 Diff Washer; ProSpec - Mi4 (pr)

BEARINGS AND BALLS

- G200 ZX1 - Microlube
- U1248 Ball Bearing Set - Steering Post (2prs)
- U1301 Silicone Diff Lube - Pot
- U1410 Ball Bearing - 10 x 15 x 4 Shielded (pr)
- U1439 Ball Bearing - 5 x 9 x 3 Non Fl. (pr)
- U1529 Ball Bearing - 4 x 8 x 3 Flanged (pr)
- U1954 Pro - Thrust Bearing
- U1957 Moly Axle Grease - Pot
- U2148 Ball Bearing - 5 x 10 x 4 Shielded (pr)
- U2189 Wheel Bearings 8pcs 10x5x4+Shim Set
- U2459 Diff Balls; T/C 2.5mm pk12
- U2574 Ball Bearing - 5 x 9 x 2.5 (pr)
- U3019 Ceramic Nitride Diff Balls 2.5mm (pk12)

SPEED PACKS

- U1543 SPEED PACK - M3 Csk Hd
- U1545 SPEED PACK - M3 Cap Hd 16;20mm
- U1547 SPEED PACK - M3 Nuts
- U1548 SPEED PACK - M3 Washers
- U1549 SPEED PACK - M4 Nuts and Washers
- U1550 SPEED PACK - Socket Wrenches (pk3)
- U1551 SPEED PACK - E Clips 2x8pcs
- U1552 SPEED PACK - R Clips
- U1606 SPEED PACK - Servo Tape
- U1633 SPEED PACK - Small Pins (pk)
- U1960 SPEED PACK - O Rings; Various
- U2128 SPEED PACK - Grub-Set Screws M3 M4
- U2184 SPEED PACK - DiscSprings+DrivePins
- U2589 SPEED PACK - Torx M3 x 8 Csk
- U2590 SPEED PACK - Torx M3 x 10 Csk
- U2591 SPEED PACK - Torx M3 x 12 Csk
- U2638 SPEED PACK - Torx M3x16mm Csk Hd
- U2641 SPEED PACK - Torx M3x8mm Pan Hd
- U2642 SPEED PACK - Torx M3x10mm Pan Hd
- U2685 SPEED PACK - Torx M3 x 6 Csk
- U2760 SPEED PACK - M3 Button Hd; 4 to 20
- U2840 SPEED PACK - Body Washers (pk 12)
- U3572 SPEED PACK - M3x14 Grub Srew pk4

TOOLS

- CR044 CORE RC - Curved Body Scissors
- CR045 CORE RC - Straight Body Scissors
- CR100 Shock Shaft Pliers - Purple
- CR101 Shock Shaft Pliers - Black
- CR102 Magnetic Parts Tray - Purple
- CR103 Magnetic Parts Tray - Black
- CR148 CORE RC - Polybutler Pit Box; Black
- H1032 Alloy Camber Gauge - 1/10th
- H1055 GT85 Lube and Clean Aerosol 400ml
- NR95120 Ultimate Cleaner Spray
- NR95280 Ultimate Activator
- NR96221 Ultimate Glue
- U2789 Schumacher Hex Driver - 1.5mm
- U2790 Schumacher Hex Driver - 2.0mm
- U2791 Schumacher Hex Driver - 2.5mm
- U2792 Schumacher Hex Driver - 3.0mm
- U2795 Schumacher M3 Nut Driver
- U2796 Schumacher M4 Nut Driver
- U2818 Schumacher Body Reamer

1/10 TOURING TYRES AND INSERTS

- U6623 SST Mini Pins 24/25 - Blue (pr)
- U6624 SST Mini Pins 24/25 - Yellow (pr)
- U6626 SST Foam Tyre Insert - 24/25 Soft (pr)
- U6627 SST Foam Tyre Insert - 24/25 Hard (pr)
- U6628 SST Foam Tyre Insert - 24/25 Comp (pr)
- U6629 SST Rally 24/25 - Yellow (pr)
- U6630 SST Rally 24/25 - White (pr)
- U6634 SST Foam Tyre Insert - 20 Soft (pr)
- U6635 SST Foam Tyre Insert - 20 Hard (pr)
- U6670 SST Mini Pins 20 - Blue (pr)
- U6671 SST Mini Pins 20 - Yellow (pr)
- U6672 SST Belted Slick 25 - White (pr)
- U6690 SST Carpet Dragon 24/25mm (pr)
- U6695 Moulded LP Insert Orange X-Soft (pr)
- U6699 SST LP24 Foam Insert;Med Blk (pr)
- U6714 Moulded CP Insert Aqua - Soft (pr)
- U6716 SST Mini Pins 24/25 - Green (pr)
- U6717 SST Mini Pins 20 - Green (pr)
- U6758 Moulded Insert; Yellow - Touring



1/10 TOURING WHEELS

- U1932 Wheel; 5 spoke 25mm - White (Pk4)
- U1933 Wheel; 5 spoke 25mm - Black (Pk4)
- U1934 Wheel; 5 spoke 25mm - Satin (Pk4)
- U1935 Wheel; 5 spoke 25mm - Chrome (Pk4)
- U2032 Wheel; 5 sp 25mm +5mm - Gold (pr) (Pk4)
- U2170 Wheel; 12 spoke 25mm - White (Pk4)
- U2171 Wheel; 12 spoke 20mm - White (Pk4)
- U2172 Wheel; 12 spoke 25mm - Purple Chrome(Pk4)
- U2173 Wheel; 5 spoke 25mm - Purple Chrome (Pk4)
- U2296 Wheel; Dish 25mm - White (Pk4)
- U2300 Wheel; 5 sp 25mm - Gold (pr) (Pk4)
- U2366 Wheel; 12 spoke 24mm - White (Pk4)
- U2393 Wheel; 12 spoke 24mm - Black(Pk4)
- U2500 Rev-Lite; 24mm - White (Pk4)
- U2501 Rev-Lite; 24mm InchUp - White(Pk4)
- U2777 Rev-Lite; Flex 24mm - White (Pk4)
- U2799 Rev-Lite Stiff; 24mm - White (Pk4)
- U3792 Rev-Lite Std; 20mm - White (Pk4)

SPEED SECRET - OPTION PARTS

- CR117 Alloy Servo Arm; Futaba Black
- CR118 Alloy Servo Arm; KO/Sanwa Black
- CR119 Heatshrink 1.5mm dia Black - 20pcs
- CR120 Heatshrink 2.0mm dia Black - 20pcs
- H1026 Ride Height Gauge; Purple Alloy; 0-10mm
- H1027 Droop Gauge Set; Purple Alloy - Touring
- U1572 Titanium Turnbuckle; purple - 39mm (pr)
- U1576 Titanium Pivot Pin; purple - 25mm (pr)
- U1577 Titanium Pivot Pin; purple - 29mm (pr)
- U2053 Titanium Turnbuckle; purple - 25mm (pr)
- U2075 Camber and Ride Height Gauges - C/C
- U2096 Aerial Mount; Purple Chrome - Universal
- U2100 Set Up Wheels;CamberandToe In-SST
- U2135 M4 Nyloc Wheel Nut - Purple Alloy (pk4)
- U2187 M3 Nyloc Nut - Purple Alloy (pk8)
- U2251 Kwik Klip; 1/8x1.0 and 2.0mm
- U2252 Alloy Gear Adaptor-Schum and Kimbro
- U2441 C/F Top Deck - Mi1
- U2443 C/F Front Shock Mount - Mi1
- U2460 Alloy Layshaft Pulley; 20t - Mi1
- U2462 Alloy Diff Mount - Mi1
- U2463 Alloy layshaft Mounts - Mi1
- U2464 Titanium Pivot Pin; purple - 57mm (pr)
- U2465 Titanium Pivot Pin; purple - 45mm (pr)
- U2472 One Way Pulley Assembly - Mi1
- U2488 C/F Extra Stiff Top Deck - Mi1
- U2575 Roll Centre Mod Kit - Mi1
- U2745 CNC Rear Diff Pulley - Mi2 + Mi1
- U2810 M4 Nyloc Wheel Nut - Red Alloy (pk4)
- U2811 M4 Nyloc Wheel Nut - Blue Alloy (pk4)
- U2812 M4 Nyloc Wheel Nut - Black Alloy (pk4)
- U2813 M4 Nyloc Wheel Nut - Gold Alloy (pk4)
- U2822 Spring Tuning Set - Pro-Touring (6 prs)
- U2823 Pro-Touring Springs - White 14 lbs
- U2824 Pro-Touring Springs - Blue 16lbs
- U2825 Pro-Touring Springs - Green 18 lbs
- U2826 Pro-Touring Springs - Red 20 lbs
- U2827 Pro-Touring Springs - Yellow 23 lbs
- U2828 Pro-Touring Springs - Purple 27 lbs
- U3001 Race Shocks; fully assembled pair
- U3096 Alloy Pivot Blocks - pk4
- U3253 CNC Overdrive Pulley; Fits Spool - 35T
- U3254 CNC Overdrive Pulley; Fits One Way - 35T
- U3265 Steel CV Drive Shafts for Spool (pr)
- U3803 C/F Chassis - Mi1
- U3805 C/F Rear Shock Mount - Mi1
- U3808 Spool; Complete Assembly - Mi1
- U3811 HD Front One Way Assembly - Mi1

Speed Secrets & Options



U3803 - Carbon Fibre Chassis - Mil

Stiffer and lighter for a more responsive car.

Silicone shock oil

- G020 - 20 weight (thin)
- G025 - 25 weight
- G030 - 30 weight
- G035 - 35 weight
- G040 - 40 weight
- G045 - 45 weight
- G050 - 50 weight
- G055 - 55 weight
- G060 - 60 weight
- G070 - 70 weight
- G080 - 80 weight
- G100 - 100 weight
- G120 - 120 weight (thick)



U3901 Race Shocks Assembled (pr)



Super smooth action shocks right from the Pro cars!!



U2460 Alloy 20T pulley - Mil
U2252 Alloy Gear Adaptor - Mil

Long life centre pulley with CNC precision. Alloy gear adaptor to use with industry std spurs with more tooth ranges.



H1010 Wiha Precision Circlip Pliers for diff maintenance.

CR044 Curved Body Scissors



E0190024 Arm Reamer 3.075mm (1/8") For perfect pin fits.

U2462 Purple Alloy Diff Mounts (pr)



CNC alloy for awesome transmission alignment in cool purple colour too.

U3808 - Spool Complete



Always recommended to use with Steel Driveshafts below.

A front spool will give improved corner exit steering and increased braking.



U3265 - Steel CV Driveshafts for spool.



U2789 Hex Driver - 1.5mm



U2790 Hex Driver - 2.00mm



U2791 Hex Driver - 2.5mm



U2795 M3 Nut Driver



U2796 M4 Nut Driver



U2818 Schumacher Body Reamer

U2463 Purple Alloy Layshaft Mounts (pr)



CNC alloy for awesome layshaft alignment in cool purple colour.

U3811 - HD Front One Way Assembly - Mil



Increase steering response on fast flowing tracks.

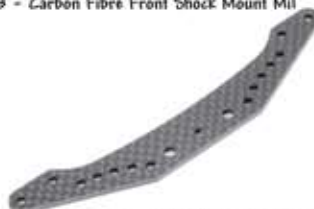


U2822 - Pro Spring Tuning Set

Carbon Fibre items increase stiffness and reduce weight.



U2443 - Carbon Fibre Front Shock Mount Mil



U3805 - Carbon Fibre Rear Shock Mount Mil



H1026 Ride Height Gauge - Purple Alloy
H1027 Droop Gauge Set - Purple Alloy



U2441 - Carbon Fibre Top Deck Mil
U2488 - Carbon Fibre 'Extra Stiff' Top Deck Mil

Increase the overall car stiffness for tuning on high grip tracks.



H1092 Alloy Camber Gauge - 1-10th